



# More intense heatwaves under drier conditions: a compound event analysis in the Adige River basin (Eastern Italian Alps)

Marc Lemus-Canovas<sup>1</sup>, Alice Crespi<sup>1</sup>, Elena Maines<sup>1</sup>, Stefano Terzi<sup>1</sup> & Massimiliano Pittore<sup>1</sup>

<sup>1</sup>Center for Climate Change and Transformation, Eurac Research, Bolzano-Bozen, 39100, Italy

5 *Correspondence to:* Marc Lemus-Canovas (marc.lemusicanovas@eurac.edu)

**Abstract.** The Adige River basin has been affected several times in recent years by concurrent very hot and dry conditions. In summers 2015, 2017, and more recently in 2021-2022, severe hydrological droughts compounded and cascaded with wildfire and heatwave events. The chained effect of snow deficit in winter, higher-than-normal temperatures in early spring and heatwaves during summer caused multiple drought impacts. Despite the severe consequences, the role of observed  
10 climate change in exacerbating the intensity of the drivers leading to specific hot and dry events and their potential impacts in this region remains poorly understood.

A ranking of compound drought and heatwave events (CDHW) occurring in the Adige River basin between 1950 and 2023 was built using E-OBS precipitation and temperature observations. The ranking was based on a composite index considering both event intensity and the spatial extent of the affected area. The major 2022 CDHW event stood out. Occurring in late  
15 spring (10–28 May 2022), it ranked fifth out of 119 events detected since 1950 and was the most intense CDHW event in the past 15 years. Considering its severe environmental and societal impacts, the 2022 CDHW event was selected for an in-depth characterisation and a climate change attribution analysis of both its meteorological drivers and hydrological impacts.

The changing characteristics of CDHW events similar to that of May 2022 were investigated through a flow-analogue attribution approach based on the reconstruction of its atmospheric conditions using ERA5 geopotential height at 500 hPa.  
20 By comparing May 2022 CDHW flow analogues from 1951–1980 (low anthropogenic forcing) and 1991–2020 (moderate-high anthropogenic forcing), we found that heatwaves comparable to the one in May 2022 are now significantly hotter –by 1-4°C– than historical analogues and occur in a much drier context, characterised by pronounced precipitation deficits. These conditions, along with earlier snowmelt and persistent precipitation deficits, have exacerbated river flow reductions and water stress in recent years. Also, shifts in the timing of a CDHW event were found to significantly influence the  
25 severity of its potential consequences.

However, extracting a reliable signal of future changes in the characteristics of CDHW events from climate projections remains challenging. Based on flow-conditioned analogues of the May 2022 event from 25 EURO-CORDEX simulations, more than half of the models failed to reproduce the observed sign of change in temperature and drought conditions. Unconditioned reconstructions showed closer agreement with observations, particularly for temperature patterns, but critical  
30 aspects such as the magnitude of the changes remained underestimated.



## 1 Introduction

The Alpine region is often referred to as the water tower of Europe due to its crucial role in sustaining water supply for downstream areas (Viviroli et al., 2007). Given its high sensitivity to climate change, any modification in climatic conditions can trigger significant effects on the availability and reliability of water resources.

35 Compound hot and dry extremes are internationally recognized for their impactful and wide effects on vegetation (Baronetti et al., 2023), human health (Morlot et al., 2023) and agriculture (Zanotelli et al., 2022) leading to larger impacts than the sum of the individual extreme effects (Hao et al., 2022; Zscheischler et al., 2020). Hot and dry conditions can trigger cascading processes such as wildfires (Feng & Sun, 2024; Fan et al., 2023; Grillakis et al., 2022), hydrological droughts (Hao et al., 2022; Feng et al., 2022), and crop failures (Brás et al., 2021; Ribeiro et al., 2020), leading to significant socio-economic  
40 losses. Compound hot and dry extremes can be influenced by both local thermodynamic processes and large-scale atmospheric circulation patterns, which interact at different spatial and temporal scales. Prolonged heatwaves in the central Mediterranean region are typically driven by the persistent presence of a high-pressure subtropical ridge over southern Europe (Sousa et al., 2021), which pushes warm air masses from northern Africa towards the northern Mediterranean basin. This atmospheric circulation pattern results in prolonged periods of high temperatures and reduced precipitation, thereby  
45 exacerbating pre-existing drought conditions (Bakke et al., 2023; Faranda et al., 2023). Moreover, the co-occurrence of warm air masses over already dry soils triggers positive feedback mechanisms, where the lack of soil moisture reduces evaporative cooling, further intensifying extreme temperatures (Miralles et al., 2014; Lemus-Canovas et al., 2024). Recent studies showed that compound hot and dry events have been increasing throughout the last decades in Europe and this trend is projected to continue with global warming (Felsche et al., 2024). Some of severe extreme hot and dry episodes  
50 which recently affected large parts of Europe, such as in 2003 (Fink et al., 2004), 2018 (Stephan et al., 2021) and 2022 (Tripathy and Mishra, 2023), showed also negative impacts in Alpine regions, especially in their lowlands. Given the accelerated warming of the Alps and the heterogeneity of their ecosystems and climatic regimes, anomalously dry and warm conditions are expected to increasingly affect Alpine areas in next future (Kotlarski et al., 2023). Understanding the main climatic drivers triggering the occurrence of compound hot and dry events is crucial to improve event predictions and better  
55 assess climate change effects. In particular, attribution analyses of specific events to anthropogenic climate change and detailed evaluation of potential primary causes of their intensification can help future impact modelling and serve as an essential resource for adaptation planning.

However, studies identifying compound drought and heatwave (CDHW) events and attributing their observed changes in the Alpine context, especially at catchment or sub-catchment scale, remain scarce. Existing works have primarily focused on  
60 large-scale phenomena affecting continental regions (Faranda et al., 2022; Stott et al., 2016), often overlooking the complex interactions between climate drivers and hydrological responses in mountainous environments. Indeed, mountain catchments present unique challenges due to the strong influence of snow dynamics (Brunner et al., 2023; Jenicek et al., 2016; Van Loon et al., 2015), elevation-dependent warming (Pepin et al., 2015), and interconnected mechanisms between atmospheric water



demand and water availability (Mastrotheodoros et al., 2020), factors that are often underrepresented in large-scale studies.

65 In addition, few studies have evaluated the performance of regional climate models (e.g., EURO-CORDEX) in applying attribution techniques, even in large-scale settings (Vautard et al., 2022). As a result, the accuracy of these models in reproducing circulation-driven changes in CDHW conditions in Alpine environments remains unexplored. This lack of evaluation underpins the need to assess the reliability of regional climate simulations for projecting future CDHW events, a crucial step in ensuring robust adaptation strategies for mountain catchments.

70 The Adige River basin in north-eastern Italy is one of the major Italian catchments and was one of the Alpine basins mostly affected by some recent high-impact hot and dry conditions, e.g., during the summers of 2015 (European Drought Observatory, 2015), 2017, and 2022 (Colombo et al., 2023). Due to the heterogeneity of its ecosystems, the complex socio-economic context, and its crucial interconnections with downstream areas, the Adige River basin proved to be particularly sensitive to the effects of CDHW events, when severe hydrological droughts occurred also in combination with wildfire  
75 events.

In particular, the winter of 2021/2022 was characterized by a lack of snowfall, followed by a rainfall deficit in early spring and above-average temperatures (Koheler et al., 2022). These conditions led to decreased soil moisture and reduced river streamflow and water availability in artificial basins and lakes (Avanzi et al., 2024). From early summer 2022, severe water-use restrictions affected multiple sectors in the Adige basin, including domestic supply, agriculture, and hydropower. Some  
80 hydropower plants were temporarily shut down and the minimum ecological flow in parts of the Adige River basin was reduced (Il Dolomiti, 2022). The insufficient availability of water for irrigation led to a shrinkage in apple production and quality in the upper basin (Alto Adige, 2022). Furthermore, a series of three consecutive heatwaves hit the area between May and September, leading to several weather alerts issued by the Civil Protection Agency and an estimated 309 attributed fatalities among the elderly ( $\geq 65$  years) population in the towns of Bolzano (40 attributed fatalities), Trento (28), Verona  
85 (23), Vicenza (22), Padova (96) and Venice (100) (Italian Ministry of Health, 2025).

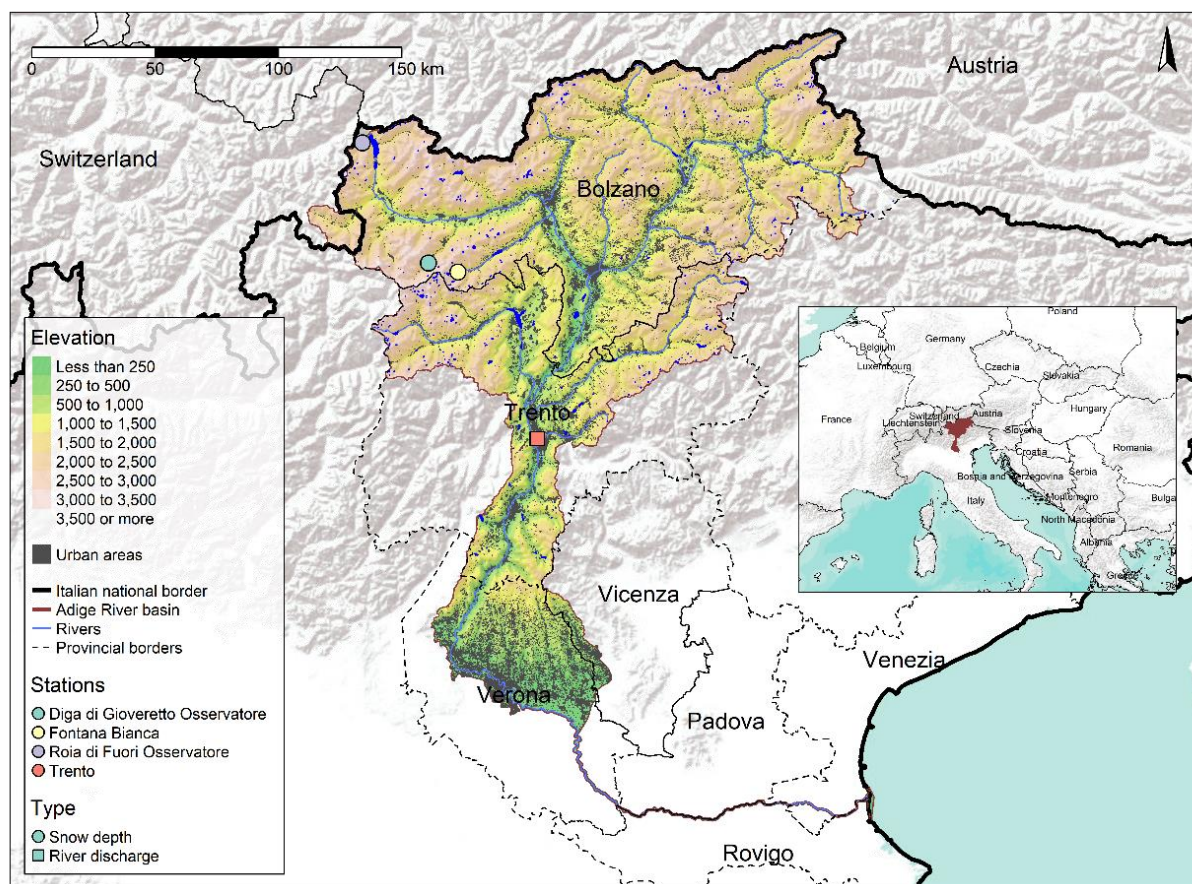
In this study, we aimed to (i) identify the recent most severe CDHW event in the Adige River catchment using a composite indicator that accounts for both their spatio-temporal extent and magnitude; (ii) attribute observed changes in the meteorological drivers exacerbating CDHW severity of this recent event, specifically focusing on how regional warming trends influence atmospheric circulation patterns and near-surface related variables; (iii) evaluate the impacts of changes in  
90 snow dynamics associated with CDHW conditions on streamflow patterns; and (iv) evaluate the ability of EURO-CORDEX regional climate models to reproduce observed changes in drought and heat conditions, both in terms of sign and magnitude, in order to assess their suitability for extending attribution analyses to future climate projections in mountainous regions.

## 2. Study area

The Adige River is the second longest river in Italy (410 km) and the third one for its overall basin area (12200 km<sup>2</sup>,  
95 Navarro-Ortega et al., 2015). It starts in the mountainous province of Bolzano in the north (62% of the overall basin), crosses



part of the province of Trento in the south (29%), the provinces of Verona, Vicenza, Padova, Rovigo and Venezia in the Veneto region (all of them summing to 9%) and ends in the Adriatic Sea (Figure 1). In the last part of the river, the basin consists of the riverbed itself, laying at a higher elevation than the adjacent floodplains and receiving no contributions from any tributaries. Almost half of the overall residential population of the basin is concentrated in the main urban areas in the valley bottoms such as Bolzano-Bozen, Trento, Rovereto and Verona with values in 2001 pointing to 1,316,909 inhabitants (Distretto Alpi Orientali, last access: 10/03/2025).



**Figure 1.** Map of the Adige River basin with elevation data, administrative borders and locations of the selected snow depth and streamflow gauging stations used in the study. Elevation data: Shuttle Radar Topography Mission (SRTM) Global, distributed by OpenTopography, <https://doi.org/10.5069/G9445JDF> (accessed: 2025-02-25).

Climate is affected by the basin orography and is characterised by cold and dry winters with rainfall maxima occurring during summer in the upstream part where elevation ranges from 0 to 3905 m above sea level (a.s.l.). At higher altitudes, significant water resources accumulate during the winter season in the form of snowfall (Bertoldi et al., 2023), which are mobilised during spring/early summer determining a snowmelt-dominated hydrological regime (average discharge of 371





m<sup>3</sup>/s in June in Trento over the last 14 years; Floods.it, last access:10/03/2025). At lower altitudes, in the downstream plains, intense precipitations in autumn are mainly driven by cyclonic storms and in spring/summer are due to snow melt processes leading to a pluvial regime with two streamflow peaks (average discharge of 310 m<sup>3</sup>/s in June and of 295 m<sup>3</sup>/s in November at Boara Pisani over the last 14 years; Ambiente Veneto, last access: 10/03/2025). As a mountain basin where glaciers and snowmelt mainly contribute to streamflow during late spring and summer, the system is highly sensitive to drought and temperature shifts: the combination of low snow cover in winter, increasing temperatures in early spring, early snow melting altering the timing of runoff, and intense heatwaves in summer can lead to widespread impacts across multiple environmental and socio-economic sectors. Beyond the climatic drivers, competing water demands for irrigation, hydropower production, tourism, and ecosystem services add further complexity to the dynamics of water availability. These demands, particularly in downstream areas, can intensify impacts and give rise to resource conflicts (Chiogna et al., 2016).

### 3. Data and Methods

#### 3.1 Data

To calculate drought and heatwave events separately we used the E-OBS v28.0 dataset (Cornes et al., 2018), which provides daily maximum temperature (TX) and total precipitation (TP) at a 0.1° spatial resolution from 1950 to 2023. Meteorological fields were analysed on a wider portion of the Eastern Alps (7°E–15°E, 44°N–49°N) centred on the Adige River basin. For comparison purposes, we also used the respective fields available in ERA5-Land reanalysis (Muñoz-Sabater et al., 2021), matching E-OBS resolution (0.1°, daily) to ensure consistency. In both cases, daily precipitation was aggregated to a monthly scale when calculating the drought indicator. To characterise the synoptic-scale atmospheric circulation, we retrieved daily geopotential height at 500 hPa (Z500) from ERA5 (Hersbach et al., 2020) at its native 0.25° resolution, covering a broader domain (10°W–30°E, 30°N–60°N) over Western Europe.

To assess the performance of climate models in comparison to observations, we used the EURO-CORDEX ensemble (Jacob et al., 2014) under both the historical and RCP8.5 scenarios for the abovementioned daily variables TX, TP and Z500. The historical simulations covered the 1951–2005 period, while the RCP8.5 scenario extended from 2006 to 2100. To ensure the calculation of the circulation analogues described in section 3.3, we extended historical simulations to 2021 by merging them with the 2006–2021 segment from the RCP8.5 simulations. The EURO-CORDEX ensemble consists of 25 members (Table A1), incorporating multiple regional climate models (RCMs) driven by different global climate models (GCMs), ensuring a robust representation of uncertainty and long-term climate trends over the Adige River basin.

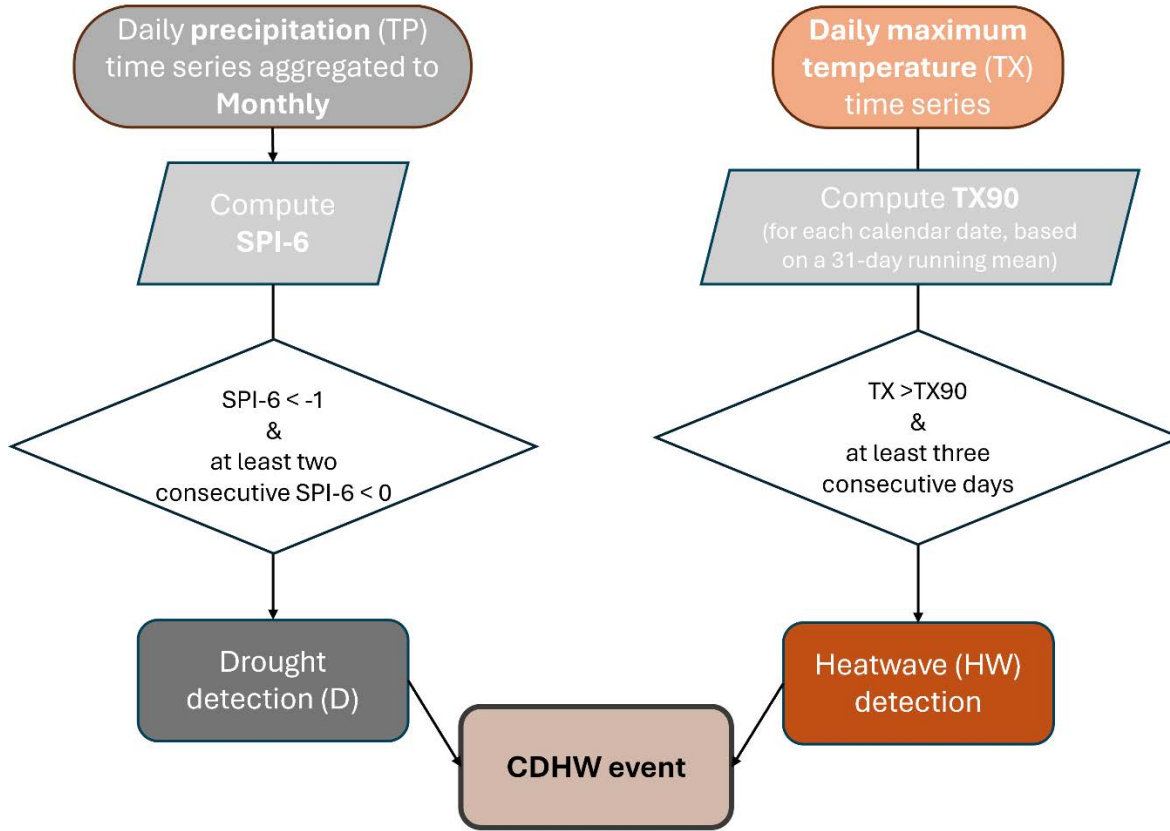
To analyse observed changes in the Adige River streamflow, we used two datasets. First, we analysed daily discharge data from the Trento-Ponte San Lorenzo gauging station (Trento Province, Italy), obtained from the Alpine Drought Observatory (Alpine Drought Observatory, 2024), covering the period 1951–2021. Second, we used daily river discharge data from the HERA (High-resolution Pan-European Hydrological Reanalysis) dataset (Tilloy et al., 2025), which provides a spatial reconstruction of river discharge with a 1.8-km resolution for the period 1951–2020. In addition to the above, we



incorporated daily snow depth data from three historical observatories located in the northwestern Adige catchment, spanning 1980–2018 and retrieved from Matiu et al. (2021), to investigate the impact of snow resources into streamflow dynamics. ERA5-Land monthly snow cover for the Adige basin from 1951 to 2020 for April, May, and June was also used to assess consistency with the river discharge patterns from HERA, as the latter was bias-corrected using ERA5-Land.

### 3.2 Definition of compound drought and heatwave events

CDHW events were identified as the simultaneous occurrence of drought and heatwave conditions at grid cell level (Fig. 2). To account for drought conditions, daily precipitation records were aggregated to monthly totals and the Standardised Precipitation Index at a 6-month scale (SPI-6) was calculated (McKee et al., 1993). The SPI-6 was chosen as it effectively captures medium-term precipitation deficits relevant for hydrological and agricultural droughts (Oikonomou et al., 2020; Tsismelis et al., 2019), making it particularly suitable for assessing impacts on river discharge, which responds to prolonged precipitation deficits rather than short-term fluctuations. A drought period was identified as a sequence of at least two consecutive months with negative SPI-6, starting with the first month with  $\text{SPI-6} < -1$ . Heatwaves were characterised as periods of at least three consecutive days with daily TX above the 90<sup>th</sup> percentile for that specific calendar day (TX90), determined from a 31-day running mean, following a similar approach as in Russo et al. (2014). If two heatwave periods were separated by only one day with non-exceeding temperature, the two periods were counted as one single event (Lavaysse et al., 2018; Serrano-Notivoli et al., 2022), and the intermediate day was included as part of the heatwave. The reference period used for calculating SPI-6 and TX90 corresponded to the whole period spanned by E-OBS from 1950 to 2023. Regional CDHW events were identified when simultaneous hot and dry conditions affected at least 60 % of the Adige catchment area.



**Figure 2. Workflow of detection of compound drought and heatwave (CDHW) event at single-cell level.**

Detected CDHW events were characterized in terms of severity. At single-cell level, the daily CDHW severity ( $CDHWsev_d$ , dimensionless) was calculated by combining drought intensity and heatwave intensity similarly as proposed by Tripathy & Mishra (2023) shown in eq. 1:

$$CDHWsev_d = (-1 \times SPI-6) \times \left( \frac{TX_d - TX_{p25}}{TX_{p75} - TX_{p25}} \right) \quad (\text{eq.1})$$

where  $SPI-6$  is the grid cell value of  $SPI-6$  in the month under CDHW conditions,  $TX_d$  is the daily maximum temperature, and  $TX_{pn}$  is the  $n^{\text{th}}$  percentile threshold for each calendar day after calculating a 31-day centred running mean. At the regional level, the CDHW severity was determined by averaging the severity values over all affected cells in the Adige River catchment. By multiplying the affected area fraction by the total  $CDHWsev$ , we generated a ranked list of events from 1950 to 2023, which allowed us to identify the May of 2022 as the most extreme CDHW event in the Adige River catchment over the last 15 years in terms of both area and severity; this event was consequently selected as a study case for the attribution analysis.



### 175 3.3 Flow analogues experiments

#### 3.3.1 Observation analysis

To attribute the record-breaking compound dry-hot conditions of May 2022, we used circulation analogues, as described by Jézéquel et al. (2018). This technique aims to infer the behaviour of a target variable (e.g., temperature and precipitation) in a past or future climate (also referred to as the counterfactual world) as well as in the current conditions (factual world), based on the specific atmospheric circulation patterns of a given event (i.e., May 2022 CDHW). The key criterion for this inference is that the atmospheric circulation characteristics during factual and counterfactual periods must be analogue to those observed during the target event. We set the factual and counterfactual periods to 1992–2021 and 1951–1980, respectively. Circulation-analogue days were defined from their root-mean-square differences (RMSD) with respect to each daily Z500 anomaly field at the time of the CDHW event. For each day of the considered event, the search of flow analogues was restricted to neighbouring months (i.e., for a CDHW in May, we considered April, May and June, AMJ), excluding the year of occurrence of the event. Analogue days were used to reconstruct the target field by randomly selecting one of the 20 best flow analogues for each day of the event. These 20 analogues represent approximately 0.7% of the total sample for each period, ensuring that only the synoptic patterns most similar to the event are retained while maintaining a representative subset for the analysis. This reconstruction was repeated 1000 times for the factual as well as the counterfactual periods. Following the above procedure, we first reconstructed the probability distribution of TX, SPI-6, daily TP over the Eastern Alps domain. Anomalies in the factual and counterfactual worlds were defined for all reconstructed variables with respect to the period 1951–2021. For comparison, the distribution of anomalies was also randomly reconstructed but, in this case, not conditioned on the target event circulation, providing a control simulation that only reflects potential thermodynamic changes due to global warming (Barriopedro et al., 2020). Subsequently, to further assess the potential impacts on streamflow of changing hot-dry conditions, daily discharge anomalies for the Adige basin were reconstructed by applying the same approach. The reconstruction of streamflow values in factual and counterfactual worlds allowed to understand the observed changes in potentially available water streamflow with implications for hydropower generation or agriculture. Three metrics were defined to support the interpretation of the analogue-based attribution analysis and are subsequently compared between the counterfactual (1951–1980) and factual (1992–2021) periods. First, the analogue quality  $Q$  represents the average RMSD of every event day from its closest 20 analogues. Differences in  $Q$  between the counterfactual and factual periods provide insights into whether the atmosphere is transitioning toward states (analogues) that are more or less similar to the Z500 map associated with the target event. Additionally, changes in the distribution of Z500 for the 20 analogues reveal whether these atmospheric conditions are becoming more or less typical over time (Faranda et al., 2020). To evaluate this, the annual frequency of analogues, i.e., the number of analogue days per year, was investigated and a linear regression was fit to get the statistical significance of the frequency trend. Thirdly, the seasonality of analogues was analysed by counting their monthly occurrence to identify shifts in analogues toward an earlier or later part of the season. Such shifts can





affect thermodynamics significantly (Faranda et al., 2022); for example, a pattern causing positive temperature anomalies in late spring could have a stronger impact if it occurs in early summer, when average temperatures are already higher.

To assess the role of interdecadal climate variability on the observed surface changes, we applied the methodology proposed by Faranda et al. (2022). Monthly teleconnection indices were obtained from NOAA/ERSSTv5 data via KNMI's Climate Explorer, specifically the Arctic Oscillation (AO) and the Atlantic Multidecadal Oscillation (AMO) (Trenberth & Shea, 2006). We performed a two-tailed Cramér-von Mises test at the 0.05 significance level in all cases to assess the significance of differences of AO and AMO between the factual and counterfactual distributions. A p-value less than 0.05 leads to the rejection of the null hypothesis ( $H=0$ ) that the two samples come from identical distributions (Anderson, 1962). In other words, we cannot rule out the possibility that the thermodynamic or dynamical differences between the analogues are due in part to these natural modes of variability rather than to anthropogenic forcing. On the other hand, when  $H=1$ , we cannot reject the null hypothesis ( $H=0$ ), suggesting that observed changes in analogues could be attributed to anthropogenic climate change rather than observed changes in the AO or AMO natural variability indices. However, we recognise that other teleconnection indices not studied in this work could also play a role in the observed changes.

### 3.3.2 EURO-CORDEX analysis

The same approach described above for the detection and reconstruction of Z500 circulation analogues for TX and SPI-6 was applied to EURO-CORDEX simulations. As for observations, SPI-6 at a monthly scale was calculated from monthly TP, which was previously aggregated from daily to monthly.

The same periods used for the observation-based analysis (i.e., 1951-1980 and 1992-2021) were adopted, providing circulation-conditioned and unconditioned reconstructions for each period and model. To evaluate the performance of the models against the observations, we analysed their ability to reproduce the direction of change between periods (i.e., the sign of difference between 1992-2021 and 1951-1980) as well as the magnitude of the change.

## 4 Results

### 4.1 Observed characteristics of the May 2022 CDHW event

In the late spring of 2022, a CDHW event hit the eastern Alps, with the most severe conditions observed in the southern half of the region, affecting over 80% of the Adige catchment (Fig. 3a). The event, which spanned from May 10 to May 28, was triggered by unprecedented drought conditions, with more than 50% of the catchment experiencing long-lasting precipitation deficits accumulated over the previous 6–12 months (Fig. A1a–e). In addition to the drought conditions, temperature anomalies recorded during this period were exceptionally high, with record-breaking values in some areas of the Adige basin, particularly in its upper and higher-elevation regions (Fig. A1f–j). The anomalous thermodynamic conditions of this event were partly driven by a strong geopotential height anomaly at 500 hPa (Figure 3b), reaching up to 120 m above average over the Alps. This atmospheric pattern contributed to the persistence of hot conditions across central Europe,



enhancing the intensity of the heatwave. In terms of event severity, the compound extremeness of the event ranked as the fifth most extreme since 1950 and was the most severe CDHW event observed in the past 15 years (Fig. 3c). As a result, 2022 emerged as the second most extreme year on record after 2003 in terms of annual CDHW severity.

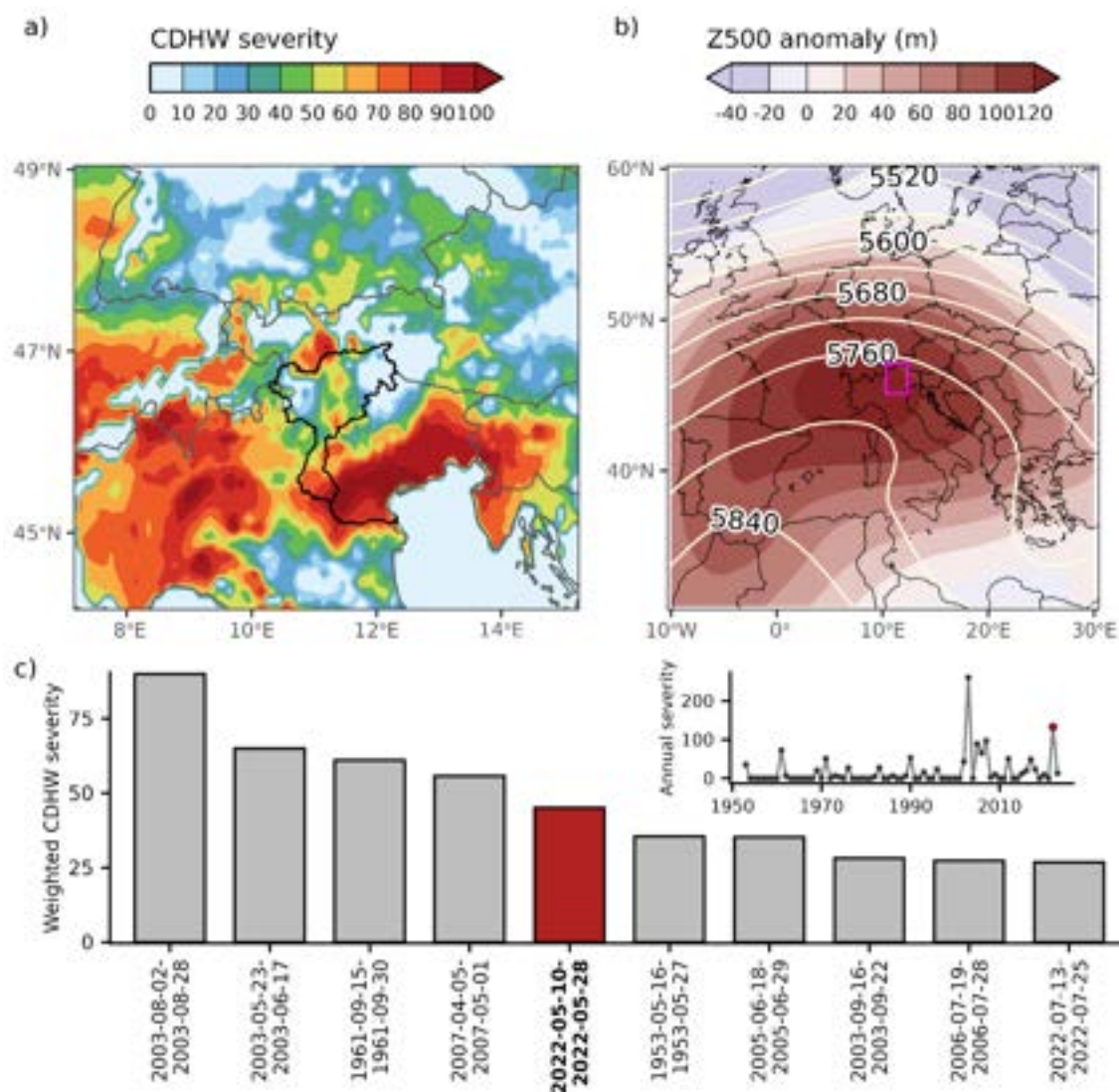


Figure 3. (a) Total severity values derived from the CDHWsev indicator and (b) 500-hPa geopotential height anomalies for the event from 10 to 28 May of 2022. c) Severity-area weighted ranked events for the Adige catchment from 1950 to 2023. The upper-right inset plot in c) shows the annual total severity-area weighted. Event and year 2022 are pointed out in red.



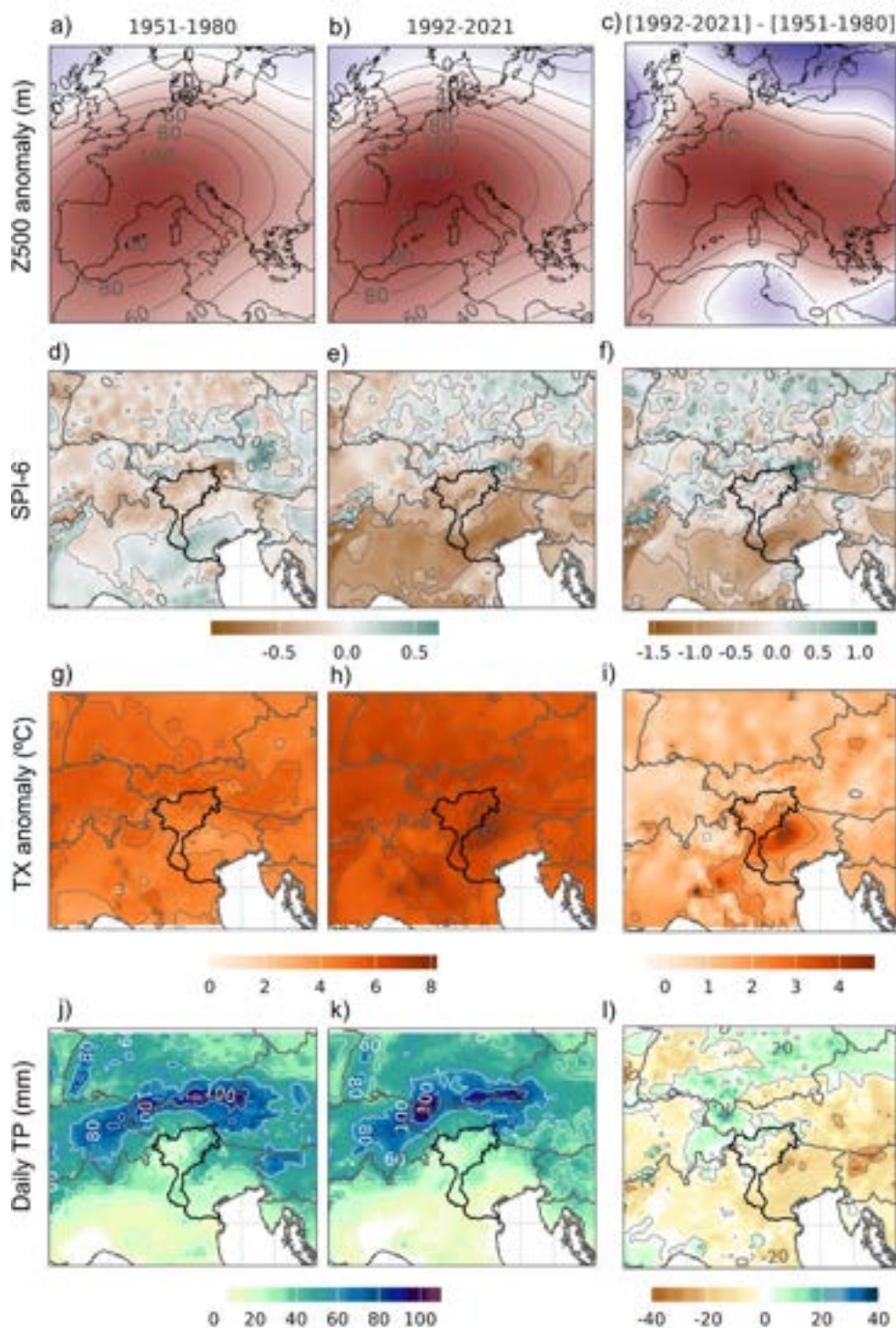
## 4.2 Observed changes in the meteorological drivers exacerbating CDHW severity

To investigate the role of global warming in enhancing the intensity of the May 10-28 event in 2022, we randomly reconstructed the atmospheric configurations leading up to the study case based on the 20 closest analogues for each day (Fig. 4). First, we reconstructed the observed anomalies averaged over the entire event for both the counterfactual (1951-1980) and factual (1992-2021) periods. This includes the Z500 anomalies (Fig. 4a-c) as synoptic variables, and SPI-6 (Fig. 4d-f), TX (Fig. 4g-i), and TP (Fig. 4j-l) as surface variables.

The reconstructed fields revealed significant changes in the synoptic conditions associated with the event. In particular, Z500 exhibited a pronounced increase over central Europe in the factual period (Fig. 4c) indicating a strengthening of the large-scale atmospheric configuration that triggered the May 2022 heatwave. This suggests that analogous synoptic situations have become more intense in recent decades compared to the counterfactual period (1951–1980). This increase in geopotential height could be explained by the warming of the air column.

In terms of surface variables, the SPI-6 revealed a clear drying pattern across almost the entire Adige catchment (Figure 4f). Notably, the southern part of the catchment shifted from a wetter-than-normal state (Figure 4d) to a drier-than-normal state (Figure 4e), a transition that is consistent with the drying pattern observed across the southern and south-eastern regions of the extended alpine domain. In contrast, the rest of the study area did not exhibit substantial changes in moisture conditions. Only the north-eastern end of the basin showed an opposite pattern, going from a drier to a wetter-than-normal state. As regards mean temperature anomalies over the entire event, the regions exhibiting the greatest warming are located in the southern and south-eastern part of the Adige basin, where the drying process shown by SPI-6 is also more pronounced (Fig. 4g-i). This consistency between temperature and SPI-6 pattern changes might suggest possible positive feedback between dry conditions and high temperatures (Zhang et al., 2023; Lemus-Canovas et al. 2025).

Temperature patterns are also consistent with the total observed precipitation changes when the circulation is conditioned to the target event (Fig. 4j-l). The reconstructed precipitation in factual and counterfactual periods shows higher amounts in the area surrounding the northern part of the Adige basin. This can suggest that the relatively wetter conditions in this area, despite slight variations between the two periods, helped to limit the maximum temperature increases between +1°C and +1.5°C with respect to 1951-1980. In contrast, in southeastern part of the basin and close surroundings, precipitation for an event like that of May 2022 decreased by almost 20 mm in 1992-2021 with respect to the past period. This precipitation reduction coincides with a temperature increase beyond that expected from global warming, quantified locally at +4°C, which might be favoured by more incoming radiation due to fewer precipitation days.

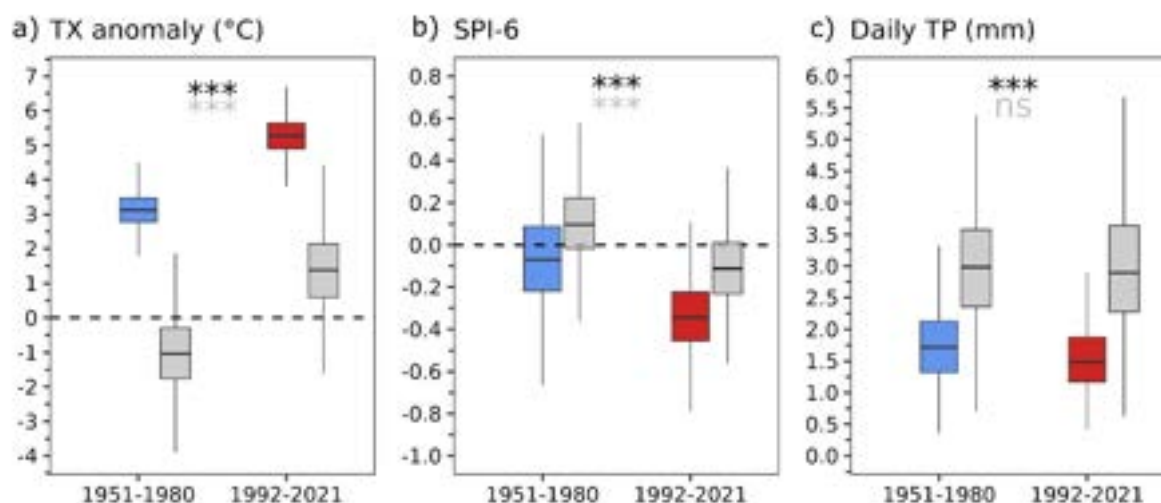


275 **Figure 4. Reconstruction of the May 2022 event using anomalies of key climate variables for past (1951–1980) and present (1992–2021) periods. Panels (a–c) depict geopotential height at 500 hPa (Z500), while panels (d–f) show Standardized Precipitation Index**



at a 6-month scale (SPI-6). Panels (g–i) present daily maximum temperature (TX) anomalies, and panels (j–l) illustrate daily total precipitation (TP) anomalies. The first two columns show anomalies for the past and present periods, computed relative to the 1951–2021 baseline. The third column displays the difference between present (1992–2021) and past (1951–1980) periods for each variable.

To summarise the above observed surface changes, we provided a flow conditioned and a random unconditioned reconstruction over the Adige basin (Fig. 5). In general, statistically significant shifts in hydroclimatic conditions were observed between the periods 1951–1980 and 1992–2021. TX anomaly showed a clear increase in the more recent period (Fig. 5a). Flow-conditioned reconstructions exhibited markedly higher values, reflecting pronounced regional warming, while unconditioned reconstructions showed greater variability but remained consistent with the overall warming trend. Furthermore, the SPI-6 shows a significant decrease in the period 1992–2021 (Fig. 5b). Unconditional reconstructions show a drying trend, transitioning from slightly positive to negative SPI-6 values (as median). In the case of TP, the difference in the median between the two periods is less clear (Fig. 5c). However, for the more recent period, the flow-conditioned reconstructions show reduced variability, as well as a statistically significant tendency towards a decrease in daily precipitation, although no significant changes are observed between unconditional TP distributions.



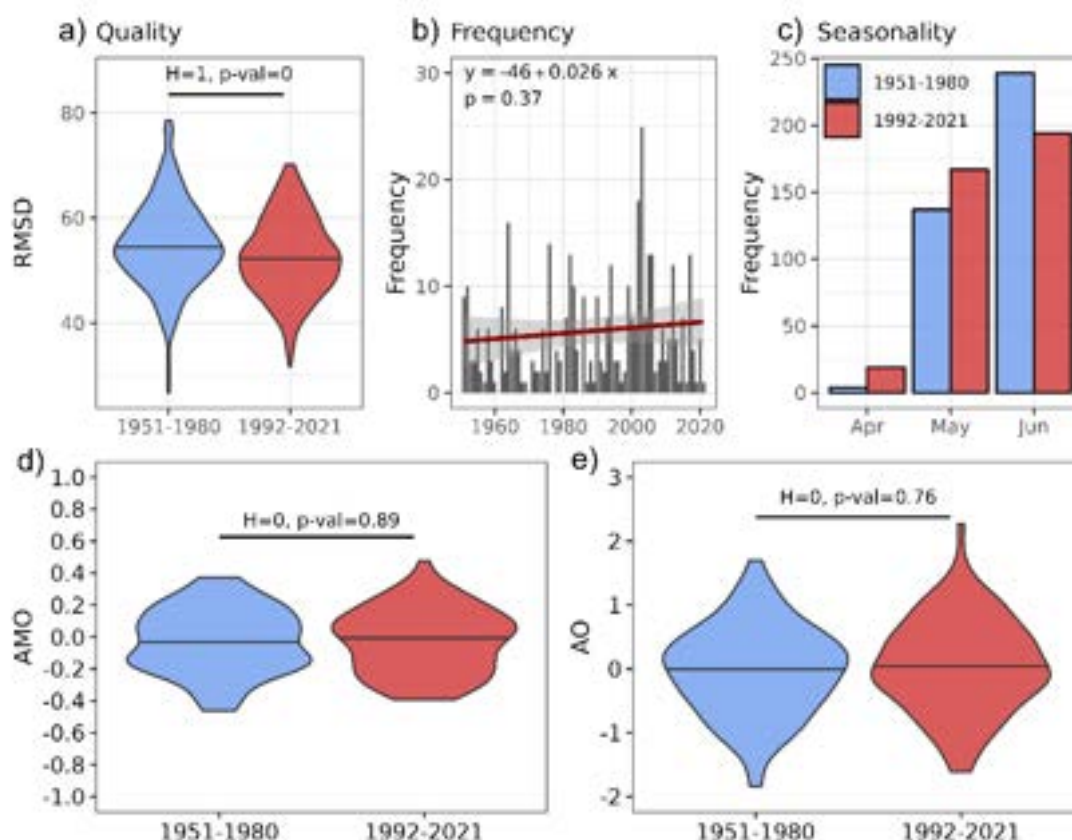
**Figure 5.** Comparison of hydrometeorological variables in the Adige River basin for the periods 1951–1980 and 1992–2021. Boxplots of (a) daily maximum temperature anomalies (TX), (b) SPI-6, and (c) daily precipitation (TP), with flow-conditioned reconstructions (colored boxes) and unconditioned reconstructions (gray boxes). To assess the statistical significance of differences between the two periods, we applied the Cramér-von Mises test at 0.1 (\*), 0.05 (\*\*) and 0.01 (\*\*\*) significance levels. The absence of statistical significance is reported as “ns”.

We also conducted a series of tests to evaluate the influence of natural variability on the observed increases in temperature and drought conditions (Fig. 6). Our results indicated that circulation structures, such as the one in May 2022, have become





more common compared to the past climate (Fig. 6a), a change linked to increased geopotential heights in Z500. However, while these patterns (i.e., analogue days) are more frequent, the upward trend remains statistically insignificant (Fig. 6b). We further examined seasonal shifts in analogue occurrences between past and present climates (Fig. 6c). Notably, there is a slight shift from late spring to mid-spring, with events like that of May 2022 occurring earlier than in previous decades. This earlier occurrence could theoretically result in lower temperatures associated with the event in the latter period compared to the former. Nevertheless, as illustrated in Fig. 6a, a clear increase in temperature persists, driven primarily by global warming rather than the accounted minor shifts in seasonality. However, in the following section, we further investigate these temporal shifts in relation to potential changes in streamflow dynamics. Finally, we examined the potential role of large-scale teleconnection patterns, such as AMO and AO, in modulating these circulation changes and their effects on surface variables (Fig. 6d-e). Our analysis shows that neither AMO (Fig. 6d) nor AO (Fig. 6e) exhibit statistically significant changes between the two periods, indicating that the considered teleconnections do not play a significant role in amplifying the intensity of recent events like May 2022. Thus, our findings suggest that recent changes in circulation and associated surface impacts are expected to be driven more by regional and global warming trends than by teleconnection influences.



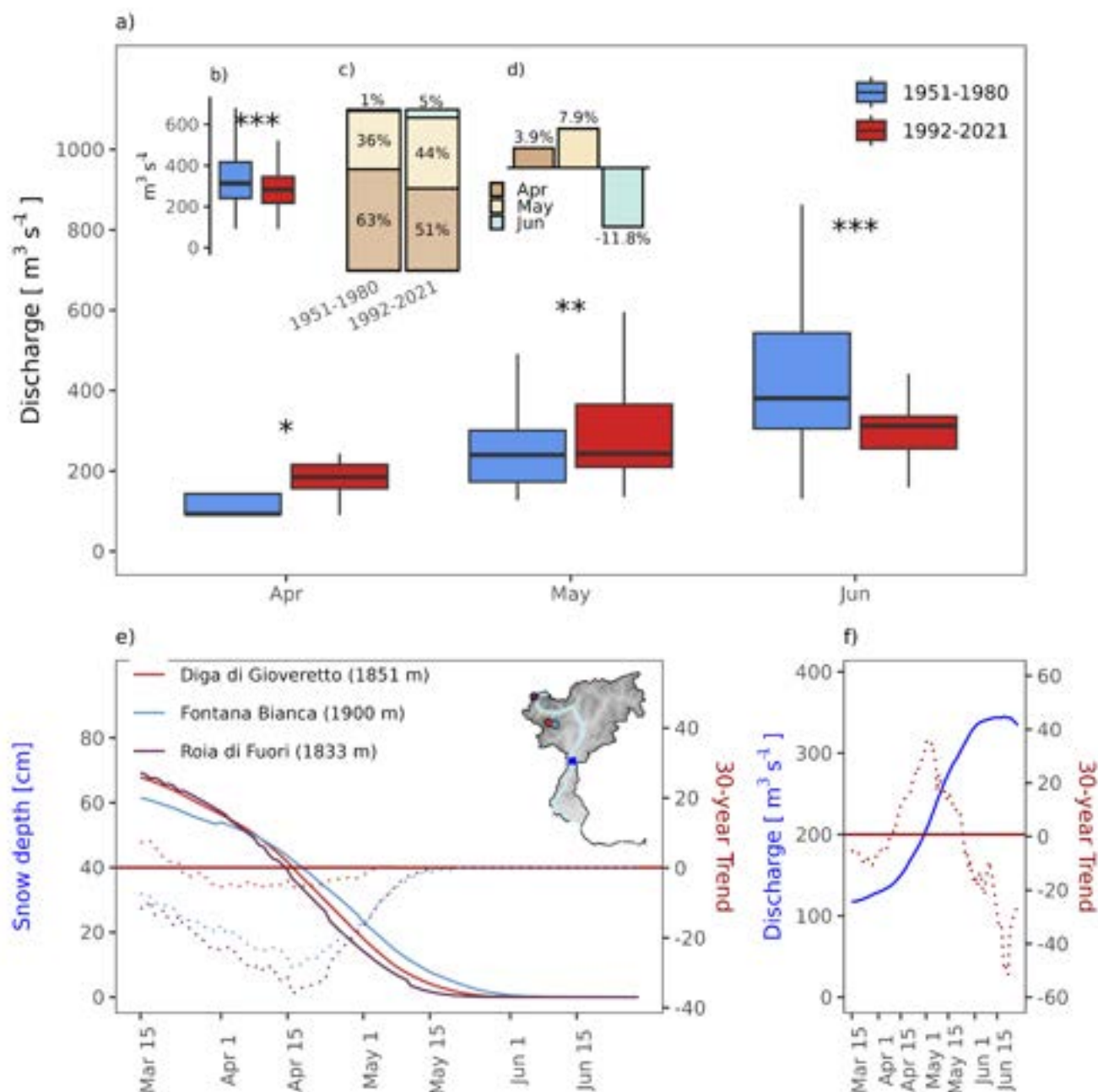
**Figure 6. Statistical analysis of the analogue days to 10-28 May 2022. Panel (a) shows the Root Mean Square Deviation (RMSD) of analogues between 1951–1980 (blue) and 1992–2021 (red). Panel (b) illustrates the annual frequency of analogue days, with a**



linear regression fit indicating no statistically significant trend. Panel (c) presents the seasonality of analogue occurrences based on monthly frequencies per period. Finally, panels (d) and (e) display the distributions of the Atlantic Multidecadal Oscillation (AMO) and Arctic Oscillation (AO) indices for the two periods. All statistical comparisons are based on the Cramer–Von Mises test.

#### 4.3 Seasonal shifts in streamflow and the impact of early snowmelt

In addition to analysing observed changes in meteorological variables, we investigated hydrological changes by examining streamflow contributions of the Adige River at Trento in relation to atmospheric circulation analogues. The results indicate that streamflow variations depend on the month in which analogues are taken, following a pattern consistent with the snowmelt-dominated pluvial regime characteristic of the Adige River in Trento (Mallucci et al., 2019; Chiogna et al., 2016). This regime is primarily controlled by spring snowmelt and autumn precipitation events. During the 1951–1980 period, we observed a progressive increase in streamflow as analogues shift from April to June (Fig. 7a). However, in the more recent period (1992–2021), this pattern changes significantly. Specifically, in April, Adige streamflow increased by more than 100 m<sup>3</sup>/s compared to the 1951–1980 period, while in May, the increase is smaller but still positive. However, in June, streamflow exhibits a pronounced decline in the recent period compared to the past (Fig. 7a). These monthly differences translate into a statistically significant overall reduction in streamflow for all analogues in April, May, and June (Fig. 7b). Moreover, this overall streamflow reduction is not only linked to changes in the river regime itself but also to a temporal redistribution of analogues (Fig. 7c). During the 1951–1980 period, 63% of the analogues of the event were taken from June -when usually streamflow is at its peak- while in the 1992–2021 period, this percentage decreased to 51%. Conversely, in the recent period, an increase of the frequency of analogues can be observed in April and May, months typically associated with lower streamflow.



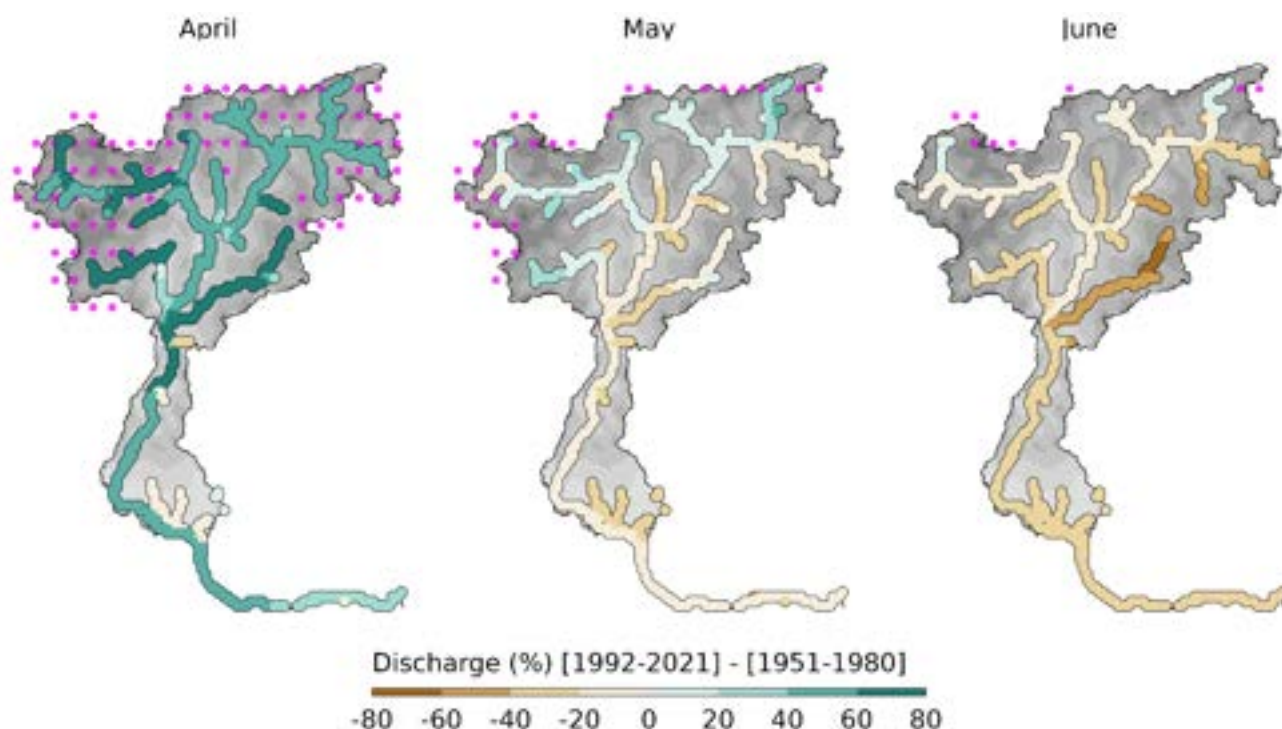
**Figure 7.** (a) Boxplots of analogues streamflow in the Adige River at Trento for April, May, and June in the periods 1951-1980 (blue) and 1992-2021 (red). (b) Overall streamflow in the two periods across all analogues, with statistical significance assessed using the Cramér-von Mises test at 0.1 (\*), 0.05 (\*\*), and 0.01 (\*\*\*) significance levels. (c) Monthly relative weights of the number of analogue days. (d) Percentage change in analogue days distribution between the two periods for each month from April to June. (e) Observed snow depth 30-days averaged climatology (solid lines) and their respective day of the year trends over 1981-2018



**period (dotted lines) at three high-altitude stations in the upper Adige catchment (circles on the inset map). (f) The same as (e) but for streamflow at Trento gauge station.**

345 Notably, given the observed changes in the river regime, the timing of a CDHW event can lead to substantially different hydrological impacts. This highlights the importance of understanding the drivers of this shift in the Adige River regime. To investigate this aspect, we analysed the temporal evolution of snow depth at three in-situ measurement points in the upper Adige catchment, all located above 1800 m (Fig. 7e). The results show that in early spring –as temperatures rise and the snowpack begins to decline rapidly– snow depth decreased by approximately 30-40 cm per 30 years based on long-term trends in mid-April (Fig. 7e, dotted lines). This translates into an earlier onset of snowmelt, which in turn led to a trend increase in Adige streamflow of up to 40 m<sup>3</sup>/s in late April to early May over the same period (Fig. 7f). In addition, this initial upward trend was followed by a subsequent decline, with streamflow 30y-trend decreasing by 50-60 m<sup>3</sup>/s by mid-June. This suggests that premature snowmelt can shift the spring peak streamflow earlier in the season, while simultaneously leading to an earlier transition into summer low-streamflow conditions. As a consequence, a CDHW event in April or early May could now encounter more water in the Adige River than in the past, while a CDHW event in June could coincide with lower streamflow than in the past thus exacerbating the effects of evapotranspiration and water demand which are generally higher due to the warmer conditions of the summer season.

To assess these hydrological changes across the entire Adige basin, we reconstructed the relative changes in river discharge, using streamflow data from the HERA dataset (Figure 8). In April, we observed increased discharge across most of the basin, which can be related to the acceleration of snowmelt processes in recent decades. This pattern in fact aligns with the earlier onset of snowmelt highlighted in Figure 7e, suggesting that warming not only anticipated the timing of snowmelt but also intensified meltwater contributions during this month.



**Figure 8. Relative changes in river discharge (%) in the Adige River basin between the periods 1992–2021 and 1951–1980 for April, May, and June. ERA5-Land pixels with at least 95% snow cover during the month, averaged over the 1951–2020 period, are highlighted in magenta for April and May. For June, the threshold was lowered to 70% to better capture snowmelt buffering areas.**

Moving into May, the discharge pattern shifts. Positive relative anomalies are primarily confined to the upper catchment areas, coinciding with the highest elevations where snow reserves persist longer, and melting is further exacerbated by recent warming. However, in the mid and lower catchments, we observe a transition towards relative discharge deficits. This reflects the earlier depletion of snow reserves due to accelerated melting in April, leaving less water available for runoff as the season progresses. By June, we observed a localised relative increase or sustainment in discharge at the northern end of the basin, mainly due to enhanced snowmelt at higher elevations – where snow persists later into the season (magenta points) – in response to ongoing regional warming. However, across most of the basin, there are pronounced relative decreases in discharge, with anomalies ranging from -60% to -20%, consistent with the patterns observed at the Trento gauge station (Figure 7f).

#### 4.4 Do EURO-CORDEX simulations reflect the observed changes for events like May 2022?

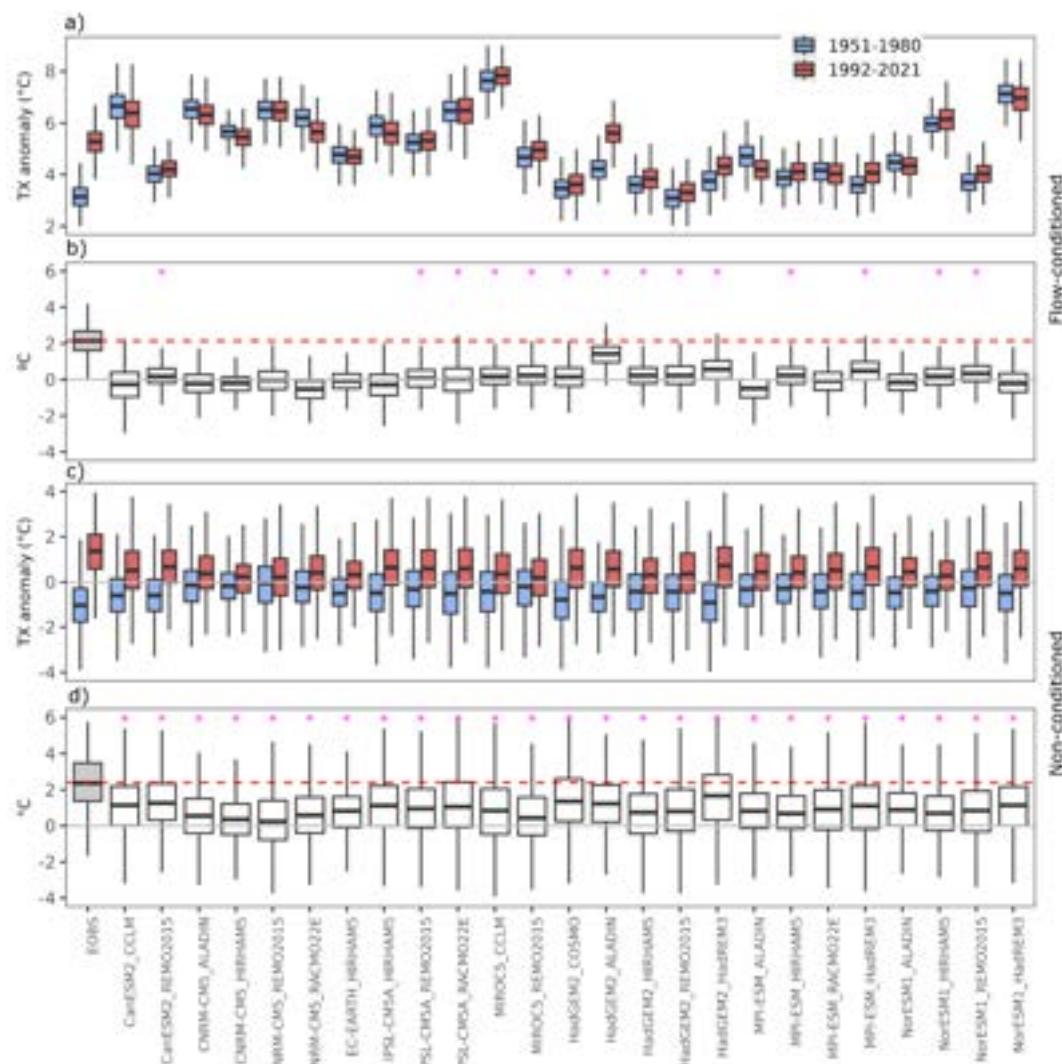
After considering the observed hydroclimatic changes for an event like May 2022, we aimed to assess the ability of 25 EURO-CORDEX simulations to capture the same temporal patterns as observed for Z500, SPI-6 and TX. We repeated the same methodological process of event reconstruction over the Adige basin similar to that shown in Figure 4, but in this case applied to the fields directly derived from each of the GCM-RCM simulations. We approached the evaluation based on two





main aspects: 1) number of models that reproduce the same sign of change between periods as in the observations; 2) number of models that reproduce a similar magnitude of change as the observations.

For temperature circulation-conditioned reconstructions (Fig. 9a,b), about 14 (56%) models are able to capture the positive  
385 sign of the change as in the observations, but strongly underestimate it (13 out of 14 show an increase less than +0.5°C while  
E-OBS and ERA5 Land estimated a general increase over +2°C and +1°C, respectively; Fig A2). In contrast, all 25 (100%)  
models reproduce the same sign of the change when they are unconditioned to the circulation of the event (Fig. 9c,d).  
However, the models still underestimate the magnitude of the change: only 12 (48%) of them show an increase of more than  
+1°C. The underestimation in TX corresponded with an underestimation of the expected increase in Z500 values in the more  
390 recent period, even when considering the 5 models closer to observations (Fig. A3). In other words, such underestimation of  
near surface temperature can be also transferred to the rest of the air column: when analyzing heatwave events analogue to  
May 2022 (Fig. A4), only 6 (24%) models reproduce the same sign of change jointly in Z500 and TX. Additionally, they  
also fail to reproduce the trend in the annual frequency of analogues shown by ERA5 (Fig. A5)

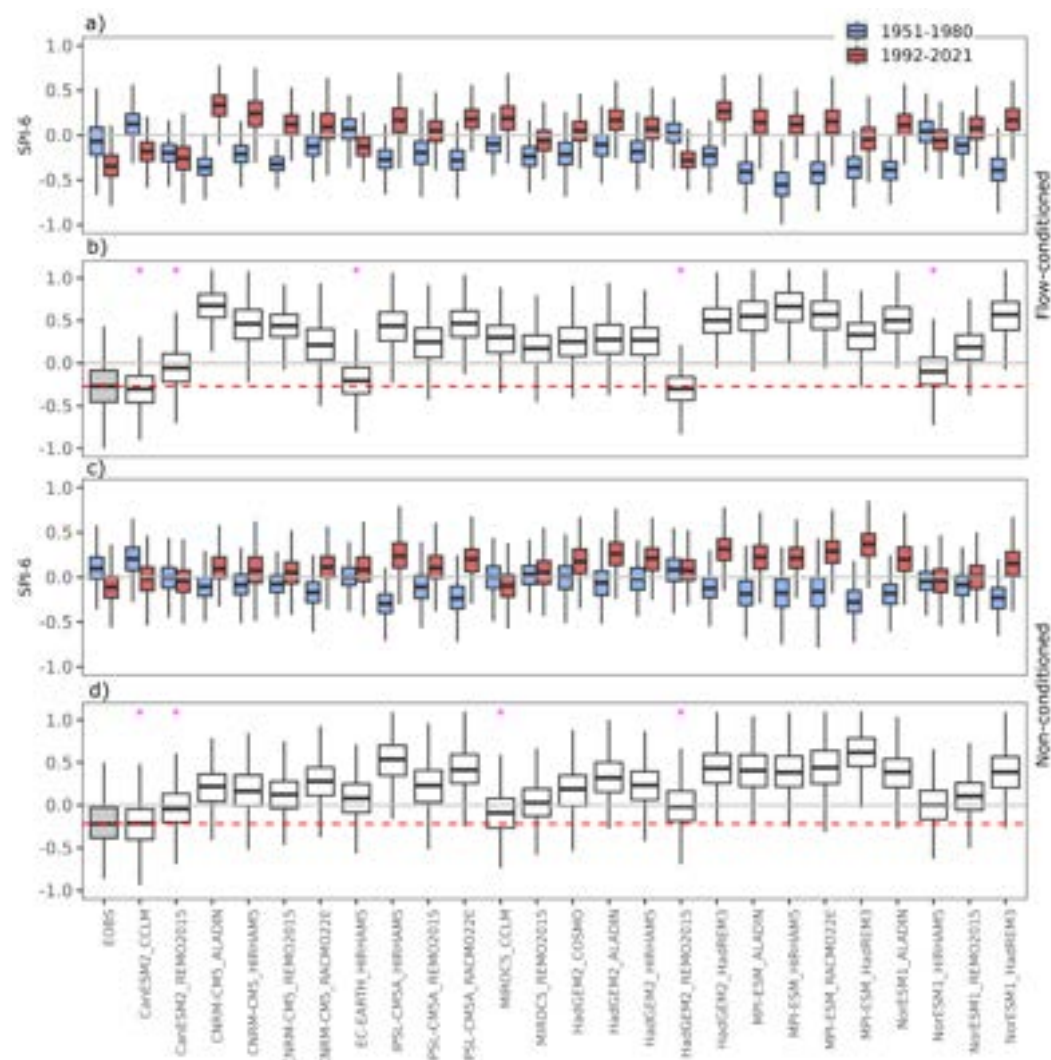


395 **Figure 9. Comparison of daily maximum temperature (TX) reconstructions for the periods 1951–1980 and 1992–2021 using flow-**  
**conditioned (panels a–b) and non-conditioned (panels c–d) approaches. Panels (a) and (c) display boxplots of temperature**  
**anomalies (°C) for individual models and the E-OBS dataset (grey shaded boxplot), with blue and red boxes representing the**  
**1951–1980 and 1992–2021 periods, respectively. Panels (b) and (d) show the differences in temperature anomalies between the two**  
**periods ([1992–2021] - [1951–1980]) for each model, highlighting changes across the models. Pink markers in panels (b) and (d)**  
**400 indicate models with same sign of change as in observations (E-OBS, cyan marker), while the red dashed lines indicate the median**  
**value for each E-OBS boxplot in (b) and (d). The complete names of the models are detailed in table A1.**

Regarding drought conditions, EURO-CORDEX simulations are not able to reproduce the same drying processes as  
observed in E-OBS for SPI-6, either conditioned (5 models, 20%) or unconditioned (4 models, 16%) to the circulation of the  
405 May 2022 event (Fig. 10). In any case, we would like to acknowledge that for SPI-6 the unconditioned and conditioned  
reconstructions perform quite similarly, because the drought is not directly related to the circulation of the May event. In



other words, the cumulative drought conditions are not caused by the May event itself, but providing these analyses are still useful to know if we can expect drought conditions to concur with a heatwave event.



410 **Figure 10.** As in Figure 9 but for monthly SPI-6.

In conclusion, there are not well-performing model simulations in both variables when reconstructing a situation like in May 2022. We found only three GCM-RCMs are able to represent the observed signal of change in both variables, but not in terms of magnitude, especially after considering their temperature increase ( $< +0.5^{\circ}\text{C}$ ).



## 5. Discussion and conclusions

415 Late spring of 2022 was extremely hot and dry in the Alps, especially in the southern half. By means of the calculated CDHW indicator, we identified a compound hot and dry event lasting 19 days in May that shattered previous maximum temperature and drought records over the last 75 years in some parts of the Adige catchment and its surroundings. Notably, this was the fifth most severe episode since 1950 and the first of the last 15 years. Early-season heatwave events like that of May 2022 are now (1992-2021) significantly hotter, with temperature increases ranging from +1°C to +4°C compared to historical events (1951-1980). Our findings show that these heatwaves now coincide with more pronounced six-month precipitation deficits across most of the Adige basin –except for its northern end– leading to significantly drier conditions compared to the past, both in the months preceding the events and during the heatwaves themselves. In particular, the intensity of heatwaves, in terms of temperature, has been further amplified in areas where precipitation related to these events has decreased. Moreover, the hydrological response to these changing conditions reveals a shift in the seasonal streamflow regime. Earlier snowmelt, driven by rising temperatures, leads to increased discharge in April, indicating an acceleration of melt processes compared to the past. However, this earlier depletion of snow reservoirs results in relative discharge deficits from May onwards, especially in mid- and lower catchment areas, as less meltwater is available to sustain streamflow. By June, most of the basin experienced substantial streamflow reductions. However, in northern high-altitude snow-fed regions, enhanced snow melt led to localized maintenance or slight increases in streamflow.

430 Thus, our results reveal the critical importance of the timing of compound hot and dry events under the current warming. The month in which such events occur significantly influences the magnitude of their potential impacts. Towards the end of spring and the onset of summer the basin experiences a marked reduction in streamflow due to earlier snowmelt and persistent precipitation deficits. This combination creates a highly vulnerable environment, where ecosystems, water resources, and agricultural systems are more exposed to the cascading effects of extreme events (i.e., earlier snowmelt depletes water reservoirs before summer, reducing streamflow precisely when water demand is at its highest, while concurrent precipitation deficits and extreme temperatures further exacerbate drought stress, soil moisture depletion, and agricultural losses).

The increase of temperature in the most recent period, as shown by the flow analogues analysis, is mostly and unequivocally attributed to global warming, as it has been already suggested by several attribution studies with focus close to the Alps (Faranda et al., 2022; Vautard et al., 2020; Barriopedro et al., 2020; Yiou et al. 2019). Furthermore, this global temperature increase is also related to the observed increase in geopotential height at 500 hPa that we found in this study, as anthropogenic forcing is conducive to warming and thermal expansion of the lower atmosphere (Christidis and Stott, 2015). Droughts are also becoming more persistent and intense over time, leading to recent unprecedented events close to the study area (Garrido-Perez et al., 2024; Faranda et al., 2023). More interestingly, we confirmed that heatwave events like the one in May 2022 now occur under drier conditions than in the past in the southern side of the Alps. The observed decrease in SPI-6 values (Fig. 5b) is consistent with studies showing that southern Europe and the Alps are experiencing more frequent and



severe droughts, attributing them to shifts in precipitation patterns and increasing evapotranspiration rates due to higher temperatures (Spinoni et al. 2017). However, in this study we did not test the contribution of climate change in exacerbating the persistence of events such as the one on May 2022. We also acknowledge a potential role of land-atmosphere interactions in such an event, as the reduction in precipitation could lead to an increase in temperature (Berg et al., 2022)

Our findings also highlighted that both drier and warmer conditions also contribute to accelerating snow melting in April, hence worsening the hydrological drought at the beginning of summer in the Adige River basin. In this sense, Beniston (2012) already highlighted that accelerated glacier retreat has also significantly reduced the buffering capacity of glaciers, impacting on summer water availability and exacerbating drought risks. More recently, several works documented the link between the extreme snow drought in winter 2021-2022 and the unprecedented hydrological drought of summer 2022 in several Italian Alpine catchments and downstream (Colombo et al., 2023; Bonaldo et al., 2023; Avanzi et al., 2024). In particular, that event led to a critical hydrological situation in the Po River, during summer 2022, described as the worst hydrological drought ever recorded in that basin (Bonaldo et al., 2022). More importantly, the decreasing pattern in river discharge observed in our study is consistent with the increased intensity and frequency of snow-drought events, i.e. the decline in snowmelt from the end of May onwards.

EURO-CORDEX models have been found to struggle to reproduce observed changes when reconstructing temperature and drought fields under specific heatwave synoptic conditions. Flow-conditioned temperature reconstructions based on the May 2022 event mostly fail to represent both the sign and magnitude of change between the recent period and the past one. In other words, the observed warming under circulation-induced heat conditions is strongly underestimated for all EURO-CORDEX models (25), which limits the feasibility of performing flow-conditioned event attribution analysis with future projections. Even when taking a sample of 5 EURO-CORDEX models presenting the best agreement -in terms of analogues quality- with ERA5, they still strongly underestimate the observed warming in terms of Z500 expansion observed in ERA5 (Fig. A3).

Vautard et al. (2023) highlighted that trends in heat extremes in Western Europe are partly linked to changes in atmospheric circulation, particularly the increase in southerly flow patterns. In addition, they found that such a type of circulation is underrepresented in global climate models (CMIP6), leading to a significant underestimation of hot temperature extremes. However, since in this study we use the flow analogue technique to constrain a similar circulation in both periods, the observed changes in Z500 are primarily due to thermodynamic factors. Thus, our results highlight that the underestimation of Z500 and temperature changes in EURO-CORDEX models may not only be related to dynamical biases, but also reflect biases in the thermodynamic response, likely due to inadequate representation of aerosol changes as found by Schumacher et al. (2024). They found that many RCMs do not account for the temporal decline of aerosols, leading to an underestimation of the thermodynamic contributions to the observed warming.

Concerning the inability of RCMs to represent the sign of change in the pattern of drought conditions, not many studies paid attention to this issue. Petrovic et al. (2022) also found that EURO-CORDEX simulations completely fail to represent drought trends, in this case for SPEI-6 applied to Germany, when compared to E-OBS trends. Even in global studies





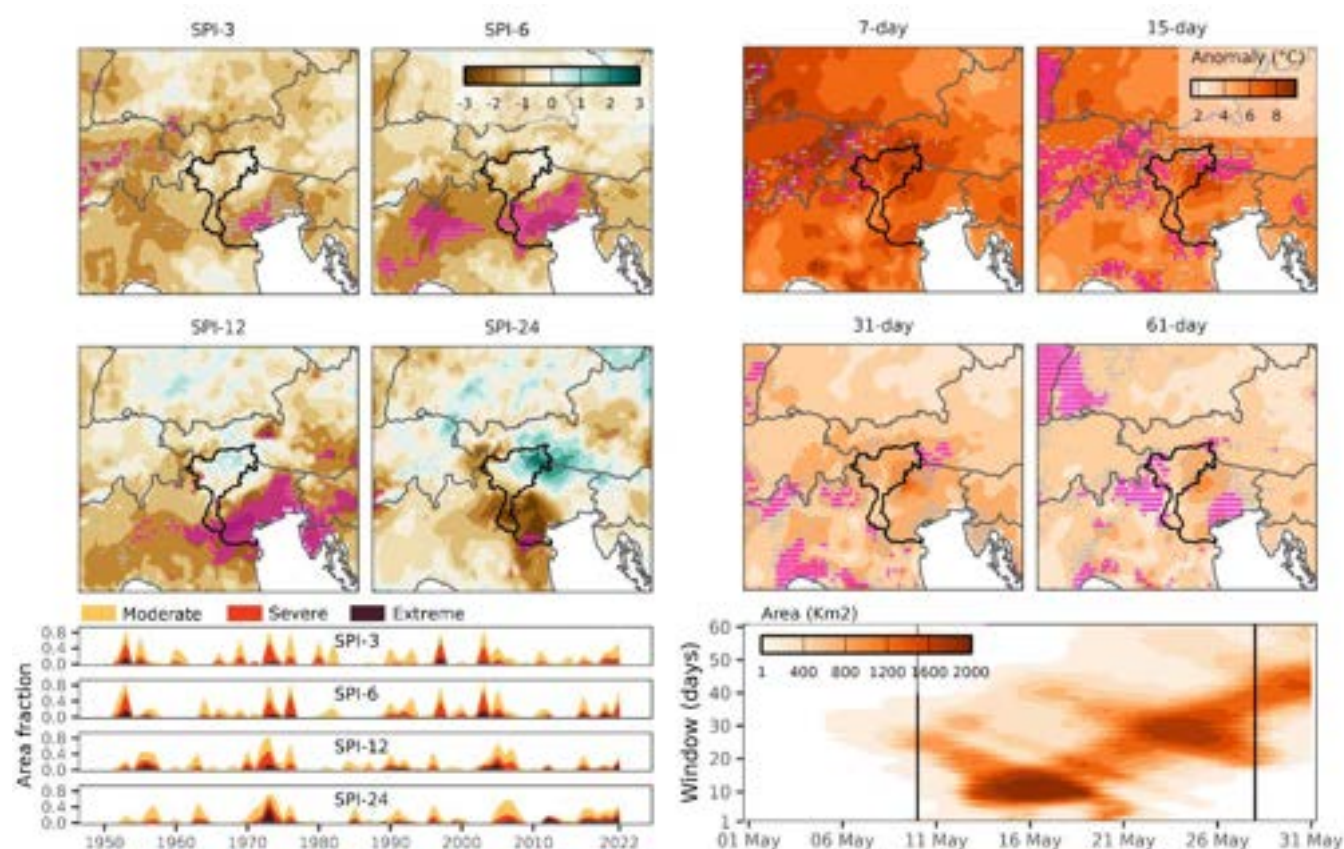
assessing drought trends using GCMs, Nasrollahi et al. (2015) agreed that most of CMIP5 models do not agree with observed regional drying and wetting trends. However, more in-depth process-based studies are needed to understand why RCMs do not reproduce observed drought changes well. Overall, our results demonstrate a clear limitation in the ability of regional climate models which should be considered before being used in circulation analog attribution studies. Thus, when  
485 working with EURO-CORDEX data, future studies should prioritise GCMs that best capture dynamically induced warming and use RCMs that better represent aerosol-induced thermodynamic changes, as suggested by Schumacher et al. (2024), to reduce underestimation, particularly in extreme heat events.

To sum up, our findings bring to light the increasing hydrological impacts of late spring/early summer compound hot and dry events in the Adige River basin and reveal significant limitations in regional climate models in capturing observed changes.  
490 This highlights the need for an improved representation of both dynamic and thermodynamic processes in historical and future simulations to enhance the reliability of impact assessments studies.

## Appendix A.

To identify record-breaking drought and temperature conditions during a specific CDHW event, as in May 2022, precipitation and temperature data were analysed separately. For drought, SPI was calculated at multiple timescales for the  
495 month of the event, ranging from 3 to 24 months, to assess preceding precipitation deficits leading up to the event. The grid points in the Adige catchment area were classified based on the corresponding drought categories defined by SPI values as proposed by McKee et al. (1993): moderate ( $-1 \leq \text{SPI} < -1.5$ ), severe ( $-1.5 \leq \text{SPI} < -2$ ), and extreme ( $\leq -2$ ).

Record-breaking temperature conditions were detected by 1) calculating a centered running average over different time windows (7-, 15-, 31-, and 61-day) for the whole time series; 2) May 2022 temperature anomalies over the different time  
500 windows were then calculated with respect to each calendar date of the month for the whole period spanned by the data. Grid points with record-breaking temperature values were identified when observed anomalies of May 2022 exceeded the previous historical maximum for each time window. We also pointed out the locations where anomalies ranked as the second highest record to give consistency to the exceptionality of the event. Additionally, to assess the spatial impact of these extreme temperature anomalies, we calculated the total area (in km<sup>2</sup>) of the Adige River basin affected by record-breaking  
505 temperature anomalies across all averaging windows (1-day to 61-day). This was done by identifying the number of grid cells where 2022 anomalies exceeded the previous record.



**Figure A1.** Maps of Standardized Precipitation Index (SPI) values at different time scales (SPI-3, SPI-6, SPI-12, SPI-24) relative to the 1950–2021 baseline, during May 2022 (panels a–d). Panel e displays the 1950–2021 time series of the area fraction of the Adige River catchment under varying drought severities. Panels f–i show daily maximum temperature anomalies (TX, relative to 1950–2021) averaged over 7-, 15-, 31-, and 61-day periods during May 2022. Magenta dots mark record-breaking TX values, while grey dots indicate the second-highest values for each grid cell. Panel j illustrates the temporal evolution of the record-breaking area (km<sup>2</sup>) during May 2022 within the Adige River catchment, assessed over moving windows of 1 to 61 days.

Other appendix figures:

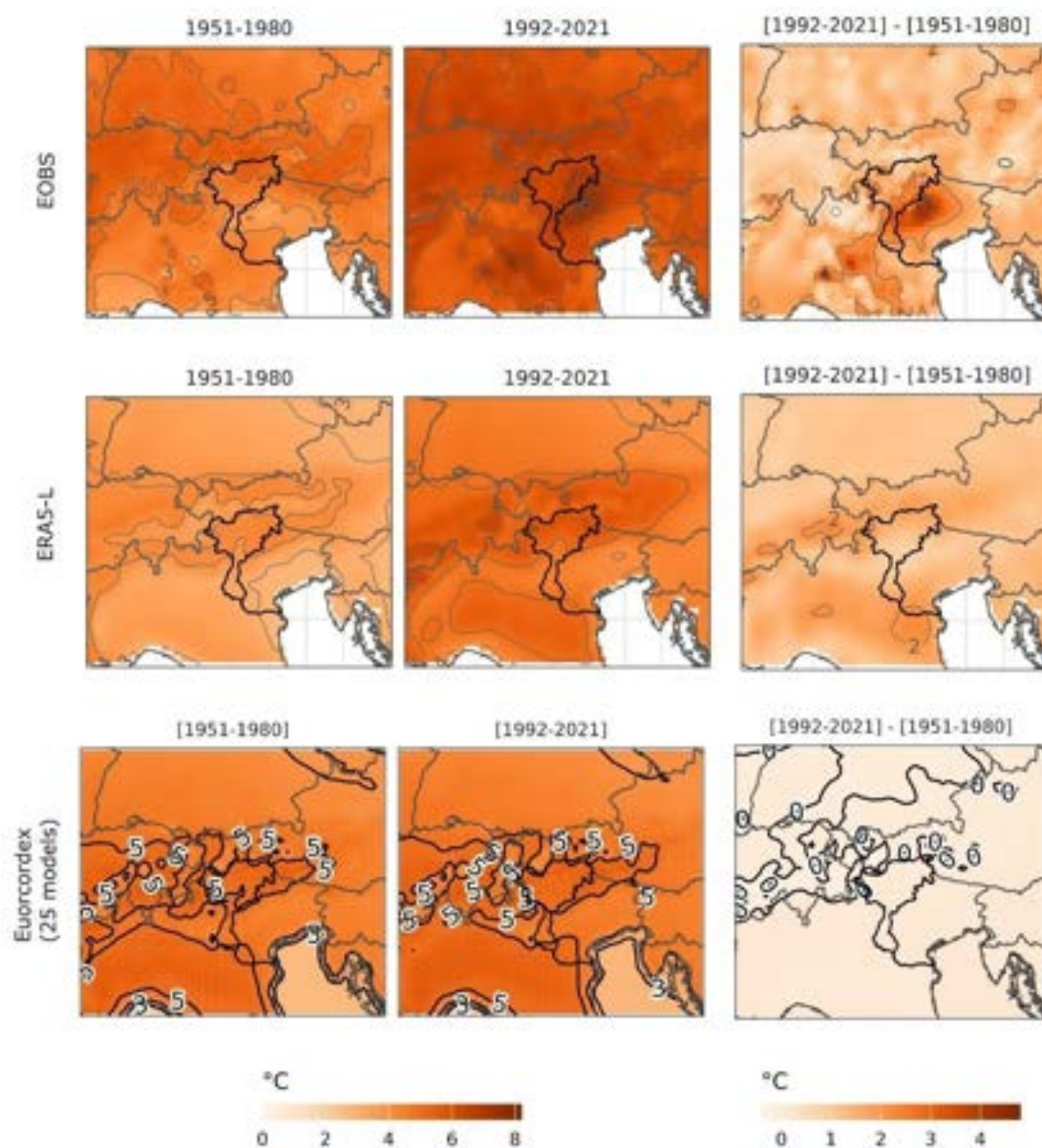
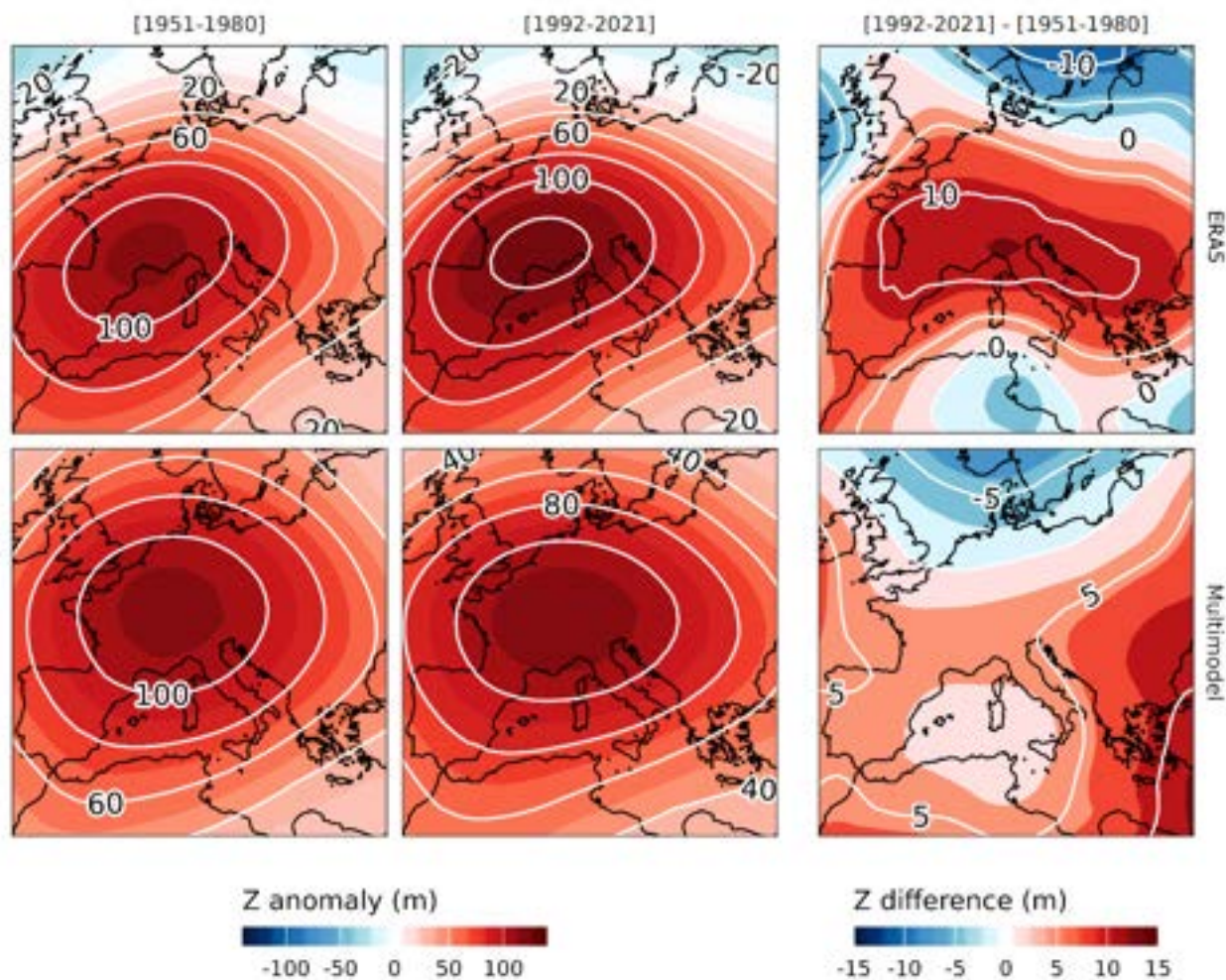
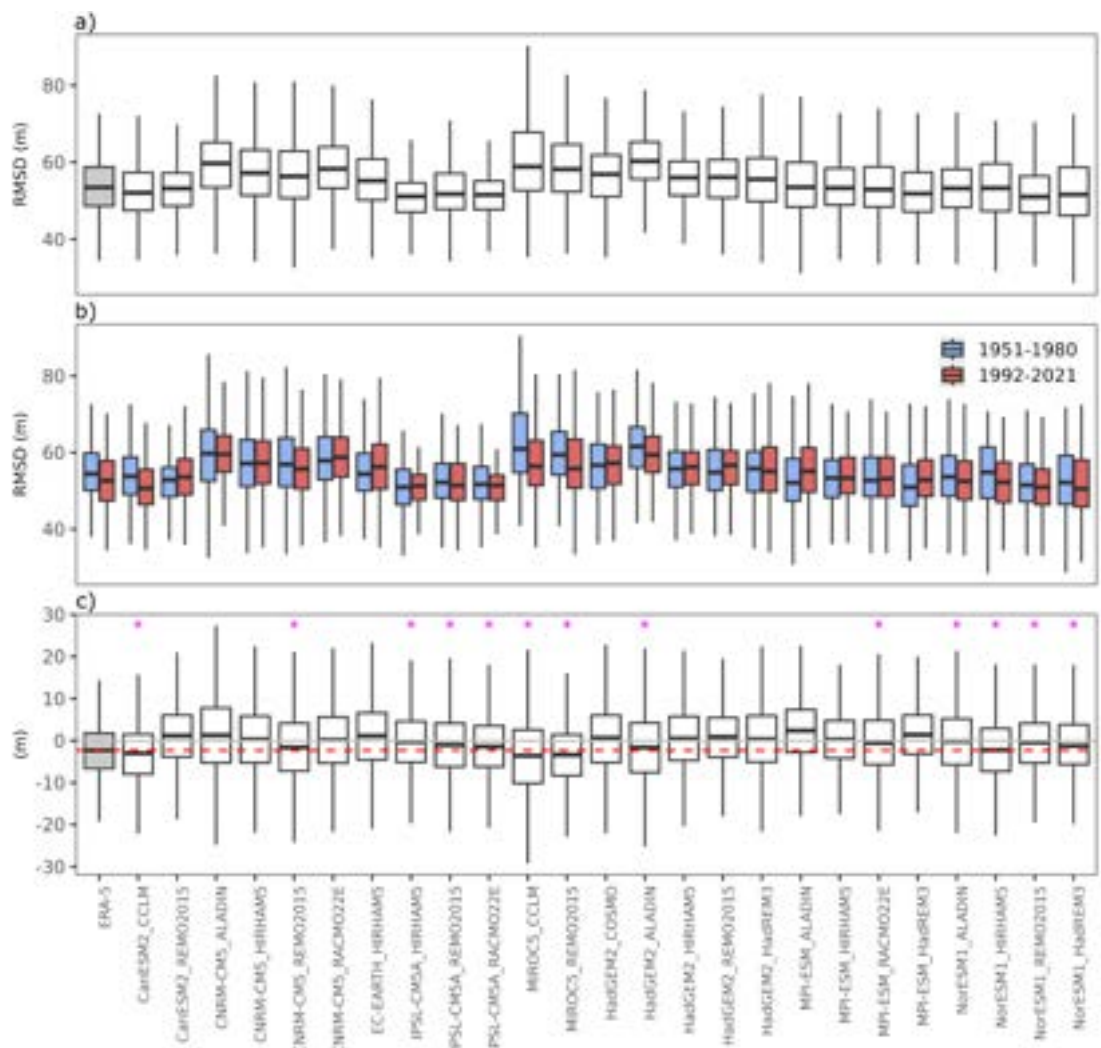


Figure A2. Spatial comparison of flow conditioned daily maximum temperature anomalies (TX) reconstructed for the periods 1951–1980 and 1992–2021, and the differences between these periods ([1992–2021] - [1951–1980]), based on three datasets: E-OBS (top row), ERA5-Land (middle row), and EURO-CORDEX ensemble mean (bottom row). The first two columns represent temperature anomalies for the two periods, while the third column shows the difference in anomalies.





525 **Figure A3.** Geopotential height flow conditioned anomalies at 500 hPa (Z500) for the periods 1951–1980 (a, d) and 1992–2021 (b, e), and the differences between the two periods ([1992–2021] - [1951–1980], c, f). Panels (a–c) show ERA5-based reconstructions, while panels (d–f) display results from the top 5 EURO-CORDEX models, selected based on their analogue quality (Fig. S4).



530 **Figure A4.** Comparison of analogue quality for geopotential height at 500 hPa (Z500) reconstructions for the periods 1951–1980  
and 1992–2021. a) displays boxplots of Root Mean Square Deviation (RMSD) values for the entire 1951–2021 period across  
individual models and the ERA5 dataset (grey shaded boxplot); b) compares RMSD values for the periods 1951–1980 (blue) and  
1992–2021 (red), showing analogue quality across models; c) illustrates the differences in RMSD between the two periods  $[(1992-2021) - (1951-1980)]$  for each model, highlighting changes in analogue quality. Pink markers in the bottom panel indicate models  
535 with same sign of change as in observations. The complete names of the models are detailed in table A1.



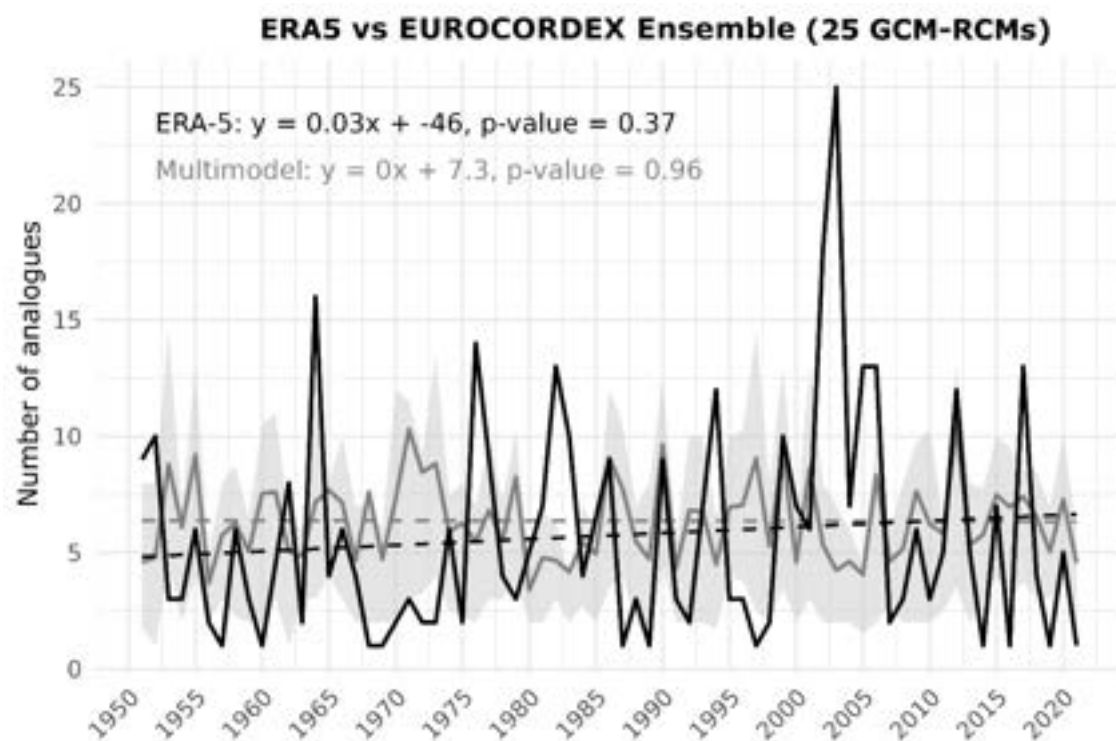


Figure A5. Annual frequency of analogue days based on geopotential height at 500 hPa (Z500) from 1950 to 2021, comparing ERA5 (black line) and the EURO-CORDEX multi-model ensemble (gray line with shading representing the inter-model spread across 25 EURO-CORDEX models based on 25th and 75th percentiles, respectively). Linear regression fits are shown for both ERA5 (dashed black line) and the multi-model ensemble (dashed gray line).

**Table A1. List of EURO-CORDEX simulations used in this study.**

Sim	GCM	RCM	GCM-RCM abbreviation
1	CCCma-CanESM2	GERICS-REMO2015	CanESM2_REMO2015
2	CCCma-CanESM2	CLMcom-CCLM4-8-17	CanESM2_CCLM
3	CNRM-CERFACS-CNRM-CM5	CNRM-ALADIN63	CNRM-CM5_ALADIN
4	CNRM-CERFACS-CNRM-CM5	DMI-HIRHAM5	CNRM-CM5_HIRHAM5
5	CNRM-CERFACS-CNRM-CM5	GERICS-REMO2015	CNRM-CM5_REMO2015
6	CNRM-CERFACS-CNRM-CM5	KNMI-RACMO22E	CNRM-CM5_RACMO22E
7	ICHEC-EC-EARTH	DMI-HIRHAM5	EC-EARTH_HIRHAM5
8	IPSL-IPSL-CM5A-MR	DMI-HIRHAM5	IPSL-CM5A_HIRHAM5
9	IPSL-IPSL-CM5A-MR	KNMI-RACMO22E	IPSL-CM5A_RACMO22E
10	IPSL-IPSL-CM5A-MR	GERICS-REMO2015	IPSL-CM5A_REMO2015
11	MIROC-MIROC5	GERICS-REMO2015	MIROC5_REMO2015
12	MIROC-MIROC5	CLMcom-CCLM4-8-17	MIROC5_CCLM
13	MOHC-HadGEM2-ES	DMI-HIRHAM5	HadGEM2_HIRHAM5
14	MOHC-HadGEM2-ES	MOHC-HadREM3-GA7-05	HadGEM2_HadREM3
15	MOHC-HadGEM2-ES	GERICS-REMO2015	HadGEM2_REMO2015
16	MOHC-HadGEM2-ES	CLMcom-ETH-COSMO-crCLIM-v1-1	HadGEM2_COSMO
17	MOHC-HadGEM2-ES	CNRM-ALADIN63	HadGEM2_ALADIN
18	MPI-M-MPI-ESM-LR	DMI-HIRHAM5	MPI-ESM_HIRHAM5
19	MPI-M-MPI-ESM-LR	CNRM-ALADIN63	MPI-ESM_ALADIN
20	MPI-M-MPI-ESM-LR	KNMI-RACMO22E	MPI-ESM_RACMO22E
21	MPI-M-MPI-ESM-LR	MOHC-HadREM3-GA7-05	MPI-ESM_HadREM3
22	NCC-NorESM1-M	MOHC-HadREM3-GA7-05	NorESM1_HadREM3
23	NCC-NorESM1-M	DMI-HIRHAM5	NorESM1_HIRHAM5
24	NCC-NorESM1-M	CNRM-ALADIN63	NorESM1_ALADIN
25	NCC-NorESM1-M	GERICS-REMO2015	NorESM1_REMO2015

**Data availability**

The compound drought and heatwave (CDHW) indicator for the Adige basin is available at Zenodo (Maines et al., 2025):

545 <https://zenodo.org/records/14859795>

All datasets used in this study are publicly accessible through the following sources:



- E-OBS was used to calculate the CDHW indicators and to assess observed changes in TX and SPI-6. The data can be accessed at the E-OBS data portal: [https://surfobs.climate.copernicus.eu/dataaccess/access\\_eobs.php#datafiles](https://surfobs.climate.copernicus.eu/dataaccess/access_eobs.php#datafiles)
- ERA5 was used to derive circulation analogues. The dataset is available from the Copernicus Climate Data Store: <https://doi.org/10.24381/cds.adbb2d47>
- EURO-CORDEX simulations were obtained from the Copernicus Climate Data Store.
- HERA reanalysis was employed to estimate observed changes in streamflow levels across the Adige basin. The dataset can be accessed at the JRC Data Catalogue (Tilloy et al., 2025): <https://data.jrc.ec.europa.eu/dataset/a605a675-9444-4017-8b34-d66be5b18c95>
- The time series of river discharge for the Adige river at its passage through Trento-Ponte San Lorenzo has been retrieved from the Alpine Drought Observatory portal: [https://edp-portal.eurac.edu/cdb\\_doc/ado/ado/](https://edp-portal.eurac.edu/cdb_doc/ado/ado/)
- Snow depth time series used in this work were obtained from Zenodo (Matu et al., 2021): <https://zenodo.org/records/5109574>

### Code availability

The flow analogues approach can be reproduced using the climattR package: <https://github.com/lemuscanovas/climattR>

### Author contributions

M.L.-C. conceptualized the study, conducted all analyses, and wrote the first manuscript draft. A.C. and E.M. contributed to the conceptualization, definition, and computation of the CDHW indicator, as well as to the writing and reviewing of the manuscript. S.T. secured funding and contributed to the writing and revision of the manuscript. M.P. contributed to the manuscript review.

### Acknowledgements

This research was supported by the European Space Agency (ESA) under the EO4MULTIHA project (2023–2025), contract number 4000141754/23/I-DT. M.L.-C. was supported by a postdoctoral contract from the program named “Programa de axudas de apoio á etapa inicial de formación posdoutoral (2022)” funded by Xunta de Galicia (Government of Galicia, Spain). Reference number: ED481B-2022-055.



## References

- Alpine Drought Observatory (YEAR). Alpine Drought Observatory project Dataset. EURAC Research. Retrieved from [https://edp-portal.eurac.edu/cdb\\_doc/ado/ado/](https://edp-portal.eurac.edu/cdb_doc/ado/ado/). (last access: 10 december 2024).
- Alto Adige. (2022, August 6). Estate pazza, già partita la raccolta delle mele. Alto Adige.  
575 <https://www.altoadige.it/cronaca/bassa-atesina/estate-pazza-gi%C3%A0-partita-la-raccolta-delle-mele-1.3287133>. (last access: 10 March 2025).
- Ambiente Veneto: Hydrological data, available at: <https://www.ambienteveneto.it/datiorari/> (last access: 10 March 2025).
- Anderson, T. W.: On the Distribution of the Two-Sample Cramer-von Mises Criterion, *The Annals of Mathematical Statistics*, 33, 1148–1159, <https://doi.org/10.1214/aoms/1177704477>, 1962.
- 580 ASTAT: Banche dati comunali, available at: <https://astat.provincia.bz.it/it/banche-dati-comunali.asp> (last access: 10 March 2025).
- Avanzi, F., Munerol, F., Milelli, M., Gabellani, S., Massari, C., Girotto, M., Cremonese, E., Galvagno, M., Bruno, G., Morra di Cella, U., Rossi, L., Altamura, M., and Ferraris, L.: Winter snow deficit was a harbinger of summer 2022 socio-hydrologic drought in the Po Basin, Italy, *Commun Earth Environ*, 5, 1–12, <https://doi.org/10.1038/s43247-024-01222-z>, 2024.
- 585 Bakke, S. J., Ionita, M., and Tallaksen, L. M.: Recent European drying and its link to prevailing large-scale atmospheric patterns, *Sci Rep*, 13, 21921, <https://doi.org/10.1038/s41598-023-48861-4>, 2023.
- Barnett, T. P., Adam, J. C., and Lettenmaier, D. P.: Potential impacts of a warming climate on water availability in snow-dominated regions, *Nature*, 438, 303–309, <https://doi.org/10.1038/nature04141>, 2005.
- Baronetti, A., Menichini, M., and Provenzale, A.: Vegetation response to droughts: The case of northern Italy, *Intl Journal of Climatology*, 44, 501–520, <https://doi.org/10.1002/joc.8340>, 2024.
- 590 Barriopedro, D., Sousa, P. M., Trigo, R. M., García-Herrera, R., and Ramos, A. M.: The Exceptional Iberian Heatwave of Summer 2018, *Bulletin of the American Meteorological Society*, 101, S29–S34, <https://doi.org/10.1175/BAMS-D-19-0159.1>, 2020.
- Benedini, M.: Assessment of Water Requirements, in: *Water Resources of Italy: Protection, Use and Control*, edited by: Rossi, G. and Benedini, M., Springer International Publishing, Cham, 143–176, [https://doi.org/10.1007/978-3-030-36460-1\\_7](https://doi.org/10.1007/978-3-030-36460-1_7), 2020.
- 595 Beniston, M.: Is snow in the Alps receding or disappearing?, *WIREs Climate Change*, 3, 349–358, <https://doi.org/10.1002/wcc.179>, 2012.
- Bertoldi, G., Bozzoli, M., Crespi, A., Matiu, M., Giovannini, L., Zardi, D., and Majone, B.: Diverging snowfall trends across months and elevation in the northeastern Italian Alps, *Intl Journal of Climatology*, 43, 2794–2819, <https://doi.org/10.1002/joc.8002>, 2023.
- 600



- Bonaldo, D., Bellafore, D., Ferrarin, C., Ferretti, R., Ricchi, A., Sangelantoni, L., and Vitelletti, M. L.: The summer 2022 drought: a taste of future climate for the Po valley (Italy)?, *Reg Environ Change*, 23, 1, <https://doi.org/10.1007/s10113-022-02004-z>, 2022.
- 605 Brás, T. A., Seixas, J., Carvalhais, N., and Jägermeyr, J.: Severity of drought and heatwave crop losses tripled over the last five decades in Europe, *Environ. Res. Lett.*, 16, 065012, <https://doi.org/10.1088/1748-9326/abf004>, 2021.
- Brunner, M. I., Götze, J., Schlemper, C., and Van Loon, A. F.: Hydrological Drought Generation Processes and Severity Are Changing in the Alps, *Geophysical Research Letters*, 50, e2022GL101776, <https://doi.org/10.1029/2022GL101776>, 2023.
- Chiogna, G., Majone, B., Cano Paoli, K., Diamantini, E., Stella, E., Mallucci, S., Lencioni, V., Zandonai, F., and Bellin, A.:  
610 A review of hydrological and chemical stressors in the Adige catchment and its ecological status, *Science of The Total Environment*, 540, 429–443, <https://doi.org/10.1016/j.scitotenv.2015.06.149>, 2016.
- Christidis, N. and Stott, P. A.: Changes in the geopotential height at 500 hPa under the influence of external climatic forcings, *Geophysical Research Letters*, 42, <https://doi.org/10.1002/2015GL066669>, 2015.
- Colombo, N., Guyennon, N., Valt, M., Salerno, F., Godone, D., Cianfarra, P., Freppaz, M., Maugeri, M., Manara, V.,  
615 Acquaotta, F., Petrangeli, A. B., and Romano, E.: Unprecedented snow-drought conditions in the Italian Alps during the early 2020s, *Environ. Res. Lett.*, 18, 074014, <https://doi.org/10.1088/1748-9326/acdb88>, 2023.
- Cornes, R. C., Van Der Schrier, G., Van Den Besselaar, E. J. M., and Jones, P. D.: An Ensemble Version of the E-OBS Temperature and Precipitation Data Sets, *JGR Atmospheres*, 123, 9391–9409, <https://doi.org/10.1029/2017JD028200>, 2018.
- Distretto Alpi Orientali: Piano di Gestione del Distretto idrografico delle Alpi Orientali 2021-2027, parte 1: Corpi idrici,  
620 available at: [https://distrettoalpiorientali.it/wp-content/uploads/2023/02/PG\\_Adige\\_1\\_Corpi\\_Idrici\\_rev01.pdf](https://distrettoalpiorientali.it/wp-content/uploads/2023/02/PG_Adige_1_Corpi_Idrici_rev01.pdf) (last access: 10 March 2025).
- Fan, X., Miao, C., Zscheischler, J., Slater, L., Wu, Y., Chai, Y., and AghaKouchak, A.: Escalating Hot-Dry Extremes Amplify Compound Fire Weather Risk, *Earth's Future*, 11, e2023EF003976, <https://doi.org/10.1029/2023EF003976>, 2023.
- Faranda, D., Vrac, M., Yiou, P., Jézéquel, A., and Thao, S.: Changes in Future Synoptic Circulation Patterns: Consequences  
625 for Extreme Event Attribution, *Geophysical Research Letters*, 47, e2020GL088002, <https://doi.org/10.1029/2020GL088002>, 2020.
- Faranda, D., Bourdin, S., Ginesta, M., Krouma, M., Noyelle, R., Pons, F., Yiou, P., and Messori, G.: A climate-change attribution retrospective of some impactful weather extremes of 2021, *Weather Clim. Dynam.*, 3, 1311–1340, <https://doi.org/10.5194/wcd-3-1311-2022>, 2022.
- 630 Faranda, D., Pascale, S., and Bulut, B.: Persistent anticyclonic conditions and climate change exacerbated the exceptional 2022 European-Mediterranean drought, *Environ. Res. Lett.*, <https://doi.org/10.1088/1748-9326/acbc37>, 2023.
- Felsche, E., Böhnisch, A., Posch, B., and Ludwig, R.: European hot and dry summers are projected to become more frequent and expand northwards, *Commun Earth Environ*, 5, 410, <https://doi.org/10.1038/s43247-024-01575-5>, 2024.





- Feng, S., Hao, Z., Zhang, X., Wu, L., Zhang, Y., and Hao, F.: Climate change impacts on concurrences of hydrological  
635 droughts and high temperature extremes in a semi-arid river basin of China, *Journal of Arid Environments*, 202, 104768,  
<https://doi.org/10.1016/j.jaridenv.2022.104768>, 2022.
- Feng, Y. and Sun, F.: Changes in the severity of compound hot-dry-windy events over global land areas, *Ecological  
Indicators*, 165, 112207, <https://doi.org/10.1016/j.ecolind.2024.112207>, 2024.
- Fink, A. H., Brücher, T., Krüger, A., Leckebusch, G. C., Pinto, J. G., and Ulbrich, U.: The 2003 European summer  
640 heatwaves and drought –synoptic diagnosis and impacts, *Weather*, 59, 209–216, <https://doi.org/10.1256/wea.73.04>, 2004.
- Floods.it: Hydrological data from Trento, available at: <https://www.floods.it/public/homepage.php> (last access: 10 March  
2025).
- Garrido-Perez, J. M., Vicente-Serrano, S. M., Barriopedro, D., García-Herrera, R., Trigo, R., and Beguería, S.: Examining  
the outstanding Euro-Mediterranean drought of 2021–2022 and its historical context, *Journal of Hydrology*, 630, 130653,  
645 <https://doi.org/10.1016/j.jhydrol.2024.130653>, 2024.
- Grillakis, M., Voulgarakis, A., Rovithakis, A., Seiradakis, K. D., Koutroulis, A., Field, R. D., Kasoar, M., Papadopoulos, A.,  
and Lazaridis, M.: Climate drivers of global wildfire burned area, *Environ. Res. Lett.*, 17, 045021,  
<https://doi.org/10.1088/1748-9326/ac5fa1>, 2022.
- Hao, Z., Hao, F., Xia, Y., Feng, S., Sun, C., Zhang, X., Fu, Y., Hao, Y., Zhang, Y., and Meng, Y.: Compound droughts and  
650 hot extremes: Characteristics, drivers, changes, and impacts, *Earth-Science Reviews*, 235, 104241,  
<https://doi.org/10.1016/j.earscirev.2022.104241>, 2022.
- Hersbach, H., Bell, B., Berrisford, P., Hirahara, S., Horányi, A., Muñoz-Sabater, J., Nicolas, J., Peubey, C., Radu, R.,  
Schepers, D., Simmons, A., Soci, C., Abdalla, S., Abellan, X., Balsamo, G., Bechtold, P., Biavati, G., Bidlot, J., Bonavita,  
M., De Chiara, G., Dahlgren, P., Dee, D., Diamantakis, M., Dragani, R., Flemming, J., Forbes, R., Fuentes, M., Geer, A.,  
655 Haimberger, L., Healy, S., Hogan, R. J., Hólm, E., Janisková, M., Keeley, S., Laloyaux, P., Lopez, P., Lupu, C., Radnoti, G.,  
De Rosnay, P., Rozum, I., Vamborg, F., Villaume, S., and Thépaut, J.: The ERA5 global reanalysis, *Quart J Royal Meteoro  
Soc*, 146, 1999–2049, <https://doi.org/10.1002/qj.3803>, 2020.
- Il Dolomiti. Emergenza idrica: Kompatscher firma un’ordinanza per ridurre il volume d’acqua del Rio Luson e interrompere  
le attività della centrale idroelettrica. Retrieved from [https://www.ildolomiti.it/ambiente/2022/emergenza-idrica-](https://www.ildolomiti.it/ambiente/2022/emergenza-idrica-kompatscher-firma-unordinanza-per-ridurre-il-volume-dacqua-del-rio-luson-e-interrompere-le-attivita-della-centrale-idroelettrica)  
660 [kompatscher-firma-unordinanza-per-ridurre-il-volume-dacqua-del-rio-luson-e-interrompere-le-attivita-della-centrale-](https://www.ildolomiti.it/ambiente/2022/emergenza-idrica-kompatscher-firma-unordinanza-per-ridurre-il-volume-dacqua-del-rio-luson-e-interrompere-le-attivita-della-centrale-idroelettrica)  
[idroelettrica](https://www.ildolomiti.it/ambiente/2022/emergenza-idrica-kompatscher-firma-unordinanza-per-ridurre-il-volume-dacqua-del-rio-luson-e-interrompere-le-attivita-della-centrale-idroelettrica); (last access: 10 March 2025).
- Italian Ministry of Health: Recommendations for the prevention of heat-related health effects, available at:  
<https://www.salute.gov.it/portale/caldo/dettaglioPubblicazioniCaldo.jsp?lingua=italiano&id=3278> (last access: 10 March  
2025).
- 665 Jacob, D., Petersen, J., Eggert, B., Alias, A., Christensen, O. B., Bouwer, L. M., Braun, A., Colette, A., Déqué, M.,  
Georgievski, G., Georgopoulou, E., Gobiet, A., Menut, L., Nikulin, G., Haensler, A., Hempelmann, N., Jones, C., Keuler, K.,  
Kovats, S., Kröner, N., Kotlarski, S., Kriegsmann, A., Martin, E., Van Meijgaard, E., Moseley, C., Pfeifer, S., Preuschmann,



- S., Radermacher, C., Radtke, K., Rechid, D., Rounsevell, M., Samuelsson, P., Somot, S., Soussana, J.-F., Teichmann, C., Valentini, R., Vautard, R., Weber, B., and Yiou, P.: EURO-CORDEX: new high-resolution climate change projections for European impact research, *Reg Environ Change*, 14, 563–578, <https://doi.org/10.1007/s10113-013-0499-2>, 2014.
- Jenicek, M., Seibert, J., Zappa, M., Staudinger, M., and Jonas, T.: Importance of maximum snow accumulation for summer low flows in humid catchments, *Hydrology and Earth System Sciences*, 20, 859–874, <https://doi.org/10.5194/hess-20-859-2016>, 2016.
- Jézéquel, A., Yiou, P., and Radanovics, S.: Role of circulation in European heatwaves using flow analogues, *Clim Dyn*, 50, 1145–1159, <https://doi.org/10.1007/s00382-017-3667-0>, 2018.
- Koehler, J., Dietz, A. J., Zellner, P., Baumhoer, C. A., Dirscherl, M., Cattani, L., Vlahović, Ž., Alasawedah, M. H., Mayer, K., Haslinger, K., Bertoldi, G., Jacob, A., and Kuenzer, C.: Drought in Northern Italy: Long Earth Observation Time Series Reveal Snow Line Elevation to Be Several Hundred Meters Above Long-Term Average in 2022, *Remote Sensing*, 14, 6091, <https://doi.org/10.3390/rs14236091>, 2022.
- Kotlarski, S., Gobiet, A., Morin, S., Olefs, M., Rajczak, J., and Samacoïts, R.: 21st Century alpine climate change, *Clim Dyn*, 60, 65–86, <https://doi.org/10.1007/s00382-022-06303-3>, 2023.
- Lange, S., Gomes, G., Feyen, L., Beck, H., Bianchi, A., Paprotny, D., Grimaldi, S., and Tilloy, A.: HERA: a high-resolution pan-European hydrological reanalysis (1950-2020), <https://doi.org/10.2905/A605A675-9444-4017-8B34-D66BE5B18C95>, 17 January 2024.
- Lavaysse, C., Cammalleri, C., Dosio, A., Van Der Schrier, G., Toreti, A., and Vogt, J.: Towards a monitoring system of temperature extremes in Europe, *Nat. Hazards Earth Syst. Sci.*, 18, 91–104, <https://doi.org/10.5194/nhess-18-91-2018>, 2018.
- Lemus-Canovas, M., Gonzalez-Herrero, S., Trapero, L., Albalat, A., Insua-Costa, D., Senande-Rivera, M., and Miguez-Macho, G.: Exploring the interplay between observed warming, atmospheric circulation, and soil-atmosphere feedbacks on heatwaves in a temperate mountain region, <https://doi.org/10.5194/nhess-2024-192>, 11 November 2024a.
- Lemus-Canovas, M., Insua-Costa, D., Trigo, R. M., and Miralles, D. G.: Record-shattering 2023 Spring heatwave in western Mediterranean amplified by long-term drought, *npj Clim Atmos Sci*, 7, 1–8, <https://doi.org/10.1038/s41612-024-00569-6>, 2024b.
- Maines, E., Crespi, A., & Lemus-Canovas, M. (2024). Compound Drought and Heatwave (CDHW) event indicators for the Adige River catchment (1950-2023) [Data set]. Zenodo. <https://doi.org/10.5281/zenodo.14859795>
- Mallucci, S., Majone, B., and Bellin, A.: Detection and attribution of hydrological changes in a large Alpine river basin, *Journal of Hydrology*, 575, 1214–1229, <https://doi.org/10.1016/j.jhydrol.2019.06.020>, 2019.
- Mastrotheodoros, T., Pappas, C., Molnar, P., Burlando, P., Manoli, G., Parajka, J., Rigon, R., Szeles, B., Bottazzi, M., Hadjidoukas, P., and Fatichi, S.: More green and less blue water in the Alps during warmer summers, *Nat. Clim. Chang.*, 10, 155–161, <https://doi.org/10.1038/s41558-019-0676-5>, 2020.
- Matiu, M., Crespi, A., Bertoldi, G., Carmagnola, C. M., Marty, C., Morin, S., Schöner, W., Cat Berro, D., Chiogna, G., De Gregorio, L., Kotlarski, S., Majone, B., Resch, G., Terzago, S., Valt, M., Beozzo, W., Cianfarra, P., Gouttevin, I., Marcolini,



- G., Notarnicola, C., Petitta, M., Scherrer, S. C., Strasser, U., Winkler, M., Zebisch, M., Cicogna, A., Cremonini, R., Debernardi, A., Falletto, M., Gaddo, M., Giovannini, L., Mercalli, L., Soubeyroux, J.-M., Sušnik, A., Trenti, A., Urbani, S., and Weilguni, V.: Observed snow depth trends in the European Alps: 1971 to 2019, *The Cryosphere*, 15, 1343–1382, <https://doi.org/10.5194/tc-15-1343-2021>, 2021.
- McKee, T.B., N.J. Doesken, and J. Kleist, 1993: The relationship of drought frequency and duration of time scales. In *Proc. of Eighth Conference on Applied Climatology*, American Meteorological Society, January 17–23, 1993, Anaheim CA.
- Michelozzi, P., De' Donato, F. K., Bargagli, A. M., D'Ippoliti, D., De Sario, M., Marino, C., Schifano, P., Cappai, G., Leone, M., Kirchmayer, U., Ventura, M., Di Gennaro, M., Leonardi, M., Oleari, F., De Martino, A., and Perucci, C. A.: Surveillance of Summer Mortality and Preparedness to Reduce the Health Impact of Heat Waves in Italy, *IJERPH*, 7, 2256–2273, <https://doi.org/10.3390/ijerph7052256>, 2010.
- Miralles, D. G., Teuling, A. J., van Heerwaarden, C. C., and Vilà-Guerau de Arellano, J.: Mega-heatwave temperatures due to combined soil desiccation and atmospheric heat accumulation, *Nature Geosci*, 7, 345–349, <https://doi.org/10.1038/ngeo2141>, 2014.
- Montanari, A., Nguyen, H., Rubinetti, S., Ceola, S., Galelli, S., Rubino, A., and Zanchettin, D.: Why the 2022 Po River drought is the worst in the past two centuries, *Sci. Adv.*, 9, eadg8304, <https://doi.org/10.1126/sciadv.adg8304>, 2023.
- Morlot, M., Russo, S., Feyen, L., and Formetta, G.: Trends in heat and cold wave risks for the Italian Trentino-Alto Adige region from 1980 to 2018, *Natural Hazards and Earth System Sciences*, 23, 2593–2606, <https://doi.org/10.5194/nhess-23-2593-2023>, 2023.
- Muñoz-Sabater, J., Dutra, E., Agustí-Panareda, A., Albergel, C., Arduini, G., Balsamo, G., Boussetta, S., Choulga, M., Harrigan, S., Hersbach, H., Martens, B., Miralles, D. G., Piles, M., Rodríguez-Fernández, N. J., Zsoter, E., Buontempo, C., and Thépaut, J.-N.: ERA5-Land: a state-of-the-art global reanalysis dataset for land applications, *Earth System Science Data*, 13, 4349–4383, <https://doi.org/10.5194/essd-13-4349-2021>, 2021.
- Nasrollahi, N., AghaKouchak, A., Cheng, L., Damberg, L., Phillips, T. J., Miao, C., Hsu, K., and Sorooshian, S.: How well do CMIP5 climate simulations replicate historical trends and patterns of meteorological droughts?, *Water Resources Research*, 51, 2847–2864, <https://doi.org/10.1002/2014WR016318>, 2015.
- Navarro-Ortega, A., Acuña, V., Bellin, A., Burek, P., Cassiani, G., Choukr-Allah, R., Dolédec, S., Eloisei, A., Ferrari, F., Ginebreda, A., Grathwohl, P., Jones, C., Rault, P. K., Kok, K., Koundouri, P., Ludwig, R. P., Merz, R., Milacic, R., Muñoz, I., Nikulin, G., Paniconi, C., Paunović, M., Petrovic, M., Sabater, L., Sabater, S., Skoulikidis, N. Th., Slob, A., Teutsch, G., Voulvoulis, N., and Barceló, D.: Managing the effects of multiple stressors on aquatic ecosystems under water scarcity. The GLOBAQUA project, *Science of The Total Environment*, 503–504, 3–9, <https://doi.org/10.1016/j.scitotenv.2014.06.081>, 2015.
- Oikonomou, P. D., Karavitis, C. A., Tsesmelis, D. E., Kolokytha, E., and Maia, R.: Drought Characteristics Assessment in Europe over the Past 50 Years, *Water Resour Manage*, 34, 4757–4772, <https://doi.org/10.1007/s11269-020-02688-0>, 2020.



- 735 Pepin, N., Bradley, R. S., Diaz, H. F., Baraer, M., Caceres, E. B., Forsythe, N., Fowler, H., Greenwood, G., Hashmi, M. Z.,  
Liu, X. D., Miller, J. R., Ning, L., Ohmura, A., Palazzi, E., Rangwala, I., Schöner, W., Severskiy, I., Shahgedanova, M.,  
Wang, M. B., Williamson, S. N., Yang, D. Q., and Mountain Research Initiative EDW Working Group: Elevation-dependent  
warming in mountain regions of the world, *Nature Clim Change*, 5, 424–430, <https://doi.org/10.1038/nclimate2563>, 2015.
- Petrovic, D., Fersch, B., and Kunstmann, H.: Droughts in Germany: performance of regional climate models in reproducing  
740 observed characteristics, *Natural Hazards and Earth System Sciences*, 22, 3875–3895, <https://doi.org/10.5194/nhess-22-3875-2022>, 2022.
- Ribeiro, A. F. S., Russo, A., Gouveia, C. M., Páscoa, P., and Zscheischler, J.: Risk of crop failure due to compound dry and  
hot extremes estimated with nested copulas, *Biogeosciences*, 17, 4815–4830, <https://doi.org/10.5194/bg-17-4815-2020>,  
2020.
- 745 Russo, S., Dosio, A., Graversen, R. G., Sillmann, J., Carrao, H., Dunbar, M. B., Singleton, A., Montagna, P., Barbola, P.,  
and Vogt, J. V.: Magnitude of extreme heat waves in present climate and their projection in a warming world, *JGR  
Atmospheres*, 119, <https://doi.org/10.1002/2014JD022098>, 2014.
- Schumacher, D. L., Singh, J., Hauser, M., Fischer, E. M., Wild, M., and Seneviratne, S. I.: Exacerbated summer European  
warming not captured by climate models neglecting long-term aerosol changes, *Commun Earth Environ*, 5, 1–14,  
750 <https://doi.org/10.1038/s43247-024-01332-8>, 2024.
- Serrano-Notivol, R., Lemus-Canovas, M., Barro, S., Sarricolea, P., Meseguer-Ruiz, O., and Tejedor, E.: Heat and cold  
waves in mainland Spain: Origins, characteristics, and trends, *Weather and Climate Extremes*, 37, 100471,  
<https://doi.org/10.1016/j.wace.2022.100471>, 2022.
- Sousa, P. M., Barriopedro, D., García-Herrera, R., Woollings, T., and Trigo, R. M.: A New Combined Detection Algorithm  
755 for Blocking and Subtropical Ridges, *Journal of Climate*, 34, 7735–7758, <https://doi.org/10.1175/JCLI-D-20-0658.1>, 2021.
- Spinoni, J., Naumann, G., and Vogt, J. V.: Pan-European seasonal trends and recent changes of drought frequency and  
severity, *Global and Planetary Change*, 148, 113–130, <https://doi.org/10.1016/j.gloplacha.2016.11.013>, 2017.
- Steiger, R., Knowles, N., Pöll, K., and Rutt, M.: Impacts of climate change on mountain tourism: a review, *Journal of  
Sustainable Tourism*, 32, 1984–2017, <https://doi.org/10.1080/09669582.2022.2112204>, 2024.
- 760 Stephan, R., Erfurt, M., Terzi, S., Žun, M., Kristan, B., Haslinger, K., and Stahl, K.: An inventory of Alpine drought impact  
reports to explore past droughts in a mountain region, *Nat. Hazards Earth Syst. Sci.*, 21, 2485–2501,  
<https://doi.org/10.5194/nhess-21-2485-2021>, 2021.
- Stott, P. A., Christidis, N., Otto, F. E. L., Sun, Y., Vanderlinden, J., Van Oldenborgh, G. J., Vautard, R., Von Storch, H.,  
Walton, P., Yiou, P., and Zwiers, F. W.: Attribution of extreme weather and climate-related events, *WIREs Climate Change*,  
765 7, 23–41, <https://doi.org/10.1002/wcc.380>, 2016.
- Tilloy, A., Paprotny, D., Grimaldi, S., Gomes, G., Bianchi, A., Lange, S., Beck, H., Mazzetti, C., and Feyen, L.: HERA: a  
high-resolution pan-European hydrological reanalysis (1951–2020), *Earth System Science Data*, 17, 293–316,  
<https://doi.org/10.5194/essd-17-293-2025>, 2025.



- Trenberth, K. E. and Shea, D. J.: Atlantic hurricanes and natural variability in 2005, *Geophysical Research Letters*, 33, 2006GL026894, <https://doi.org/10.1029/2006GL026894>, 2006.
- Tripathy, K. P. and Mishra, A. K.: How Unusual Is the 2022 European Compound Drought and Heatwave Event?, *Geophysical Research Letters*, 50, e2023GL105453, <https://doi.org/10.1029/2023GL105453>, 2023.
- Tsemmelis, D. E., Oikonomou, P. D., Vasilakou, C. G., Skondras, N. A., Fassouli, V., Alexandris, S. G., Grigg, N. S., and Karavitis, C. A.: Assessing structural uncertainty caused by different weighting methods on the Standardized Drought Vulnerability Index (SDVI), *Stoch Environ Res Risk Assess*, 33, 515–533, <https://doi.org/10.1007/s00477-019-01648-4>, 2019.
- Van Loon, A. F., Ploum, S. W., Parajka, J., Fleig, A. K., Garnier, E., Laaha, G., and Van Lanen, H. a. J.: Hydrological drought types in cold climates: quantitative analysis of causing factors and qualitative survey of impacts, *Hydrology and Earth System Sciences*, 19, 1993–2016, <https://doi.org/10.5194/hess-19-1993-2015>, 2015.
- Vautard, R., Van Aalst, M., Boucher, O., Drouin, A., Haustein, K., Kreienkamp, F., Van Oldenborgh, G. J., Otto, F. E. L., Ribes, A., Robin, Y., Schneider, M., Soubeyroux, J.-M., Stott, P., Seneviratne, S. I., Vogel, M. M., and Wehner, M.: Human contribution to the record-breaking June and July 2019 heatwaves in Western Europe, *Environ. Res. Lett.*, 15, 094077, <https://doi.org/10.1088/1748-9326/aba3d4>, 2020.
- Vautard, R., Cattiaux, J., Hap  , T., Singh, J., Bonnet, R., Cassou, C., Coumou, D., D’Andrea, F., Faranda, D., Fischer, E., Ribes, A., Sippel, S., and Yiou, P.: Heat extremes in Western Europe increasing faster than simulated due to atmospheric circulation trends, *Nat Commun*, 14, 6803, <https://doi.org/10.1038/s41467-023-42143-3>, 2023.
- Viviroli, D., D  rr, H. H., Messerli, B., Meybeck, M., and Weingartner, R.: Mountains of the world, water towers for humanity: Typology, mapping, and global significance, *Water Resources Research*, 43, 2006WR005653, <https://doi.org/10.1029/2006WR005653>, 2007.
- Yiou, P., Cattiaux, J., Faranda, D., Kadyrov, N., J  z  quel, A., Naveau, P., Ribes, A., Robin, Y., Thao, S., Oldenborgh, G. J. van, and Vrac, M.: Analyses of the Northern European Summer Heatwave of 2018, *Bulletin of the American Meteorological Society*, 101, S35–S40, <https://doi.org/10.1175/BAMS-D-19-0170.1>, 2020.
- Zanotelli, D., Montagnani, L., Andreotti, C., and Tagliavini, M.: Water and carbon fluxes in an apple orchard during heat waves, *European Journal of Agronomy*, 134, 126460, <https://doi.org/10.1016/j.eja.2022.126460>, 2022.
- Zhang, L., Yu, X., Zhou, T., Zhang, W., Hu, S., and Clark, R.: Understanding and Attribution of Extreme Heat and Drought Events in 2022: Current Situation and Future Challenges, *Adv. Atmos. Sci.*, 40, 1941–1951, <https://doi.org/10.1007/s00376-023-3171-x>, 2023.
- Zscheischler, J., Martius, O., Westra, S., Bevacqua, E., Raymond, C., Horton, R. M., van den Hurk, B., AghaKouchak, A., J  z  quel, A., Mahecha, M. D., Maraun, D., Ramos, A. M., Ridder, N. N., Thiery, W., and Vignotto, E.: A typology of compound weather and climate events, *Nat Rev Earth Environ*, 1, 333–347, <https://doi.org/10.1038/s43017-020-0060-z>, 2020.